

JAN. 21, 1984. S. ZEMAN, J. BAKERLY, B. BENEDICT, R. RIGG WENT DOWN BELOW MA PHONG TO LOOK AT A SINKING STREAM. ZEMAN, BENEDICT ENTERED THE CAVE, AND EXPLORED A SHORT DISTANCE TO A DROP. THEY RETURNED TO THE HOUSE WHERE J. BENEDICT - BOB BENEDICT + R. RIGG WENT BACK TO MA PHONG 'SUI' LOOG CAVE. WHILE THE OTHERS + DIND. LOWEY + AMIE WENT TO LOOK AT ANOTHER ENTRANCE. MIKE INGRAM STAYED AT THE HOUSE. BOB, JEAN + RICK RIGGED AND DROPPED THREE PROPS AND WERE STOPPED BY A FOURTH.

JAN. 22, 1984 - WE WENT IN WITH MORE ROPE. ALL OF WHICH WAS USED IN THE FOURTH DROP SERIES. STEVE BOB + JEAN SURVEYED. RICK + JEB RIGGED AND EXPLORED. WE WERE STOPPED BY A FIFTH DROP IN A BIG BEAUTIFUL STREAM. PASSAGE NOT FAR FROM THE BOTTOM OF THE FOURTH DROP SERIES AND NO MORE ROPE AVAILABLE.

MA PHONG SUI TRUNG
HORSE HOUSE WATER CAVE

SOUND + TAPE SURVEY IN METERS

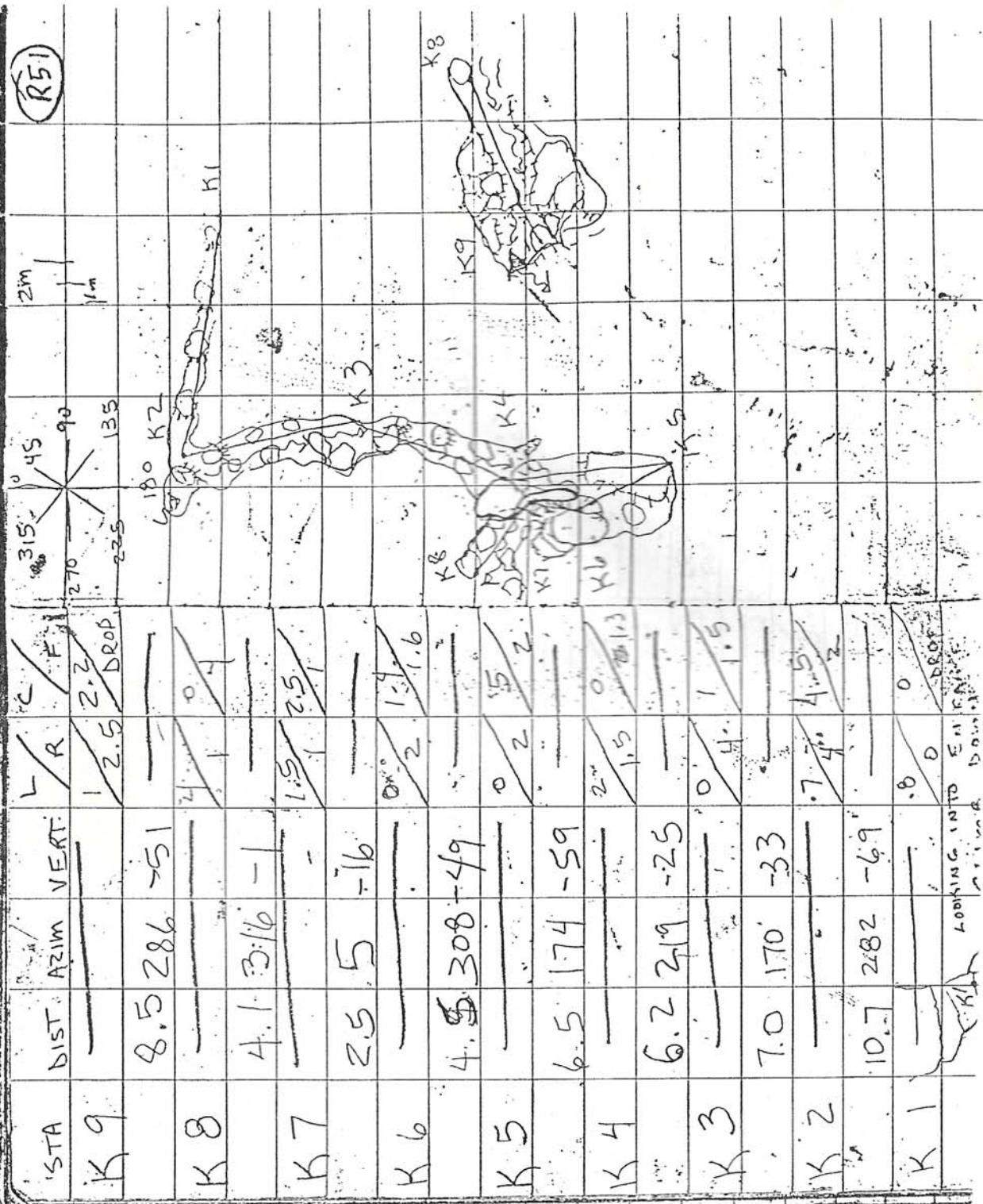
JAN. 22, 1984

BOOK - J. BENEDICT
INSTRUMENTS - S. ZEMAN
TAPE - B. BENEDICT
RIG - R. RIGG, J. BAKERLEY

WEATHER - HOT + DRY
CHIANG MAI PROVINCE
FANG. REGION

K-9-K10
CINE FILM ANCORSET

(R51)

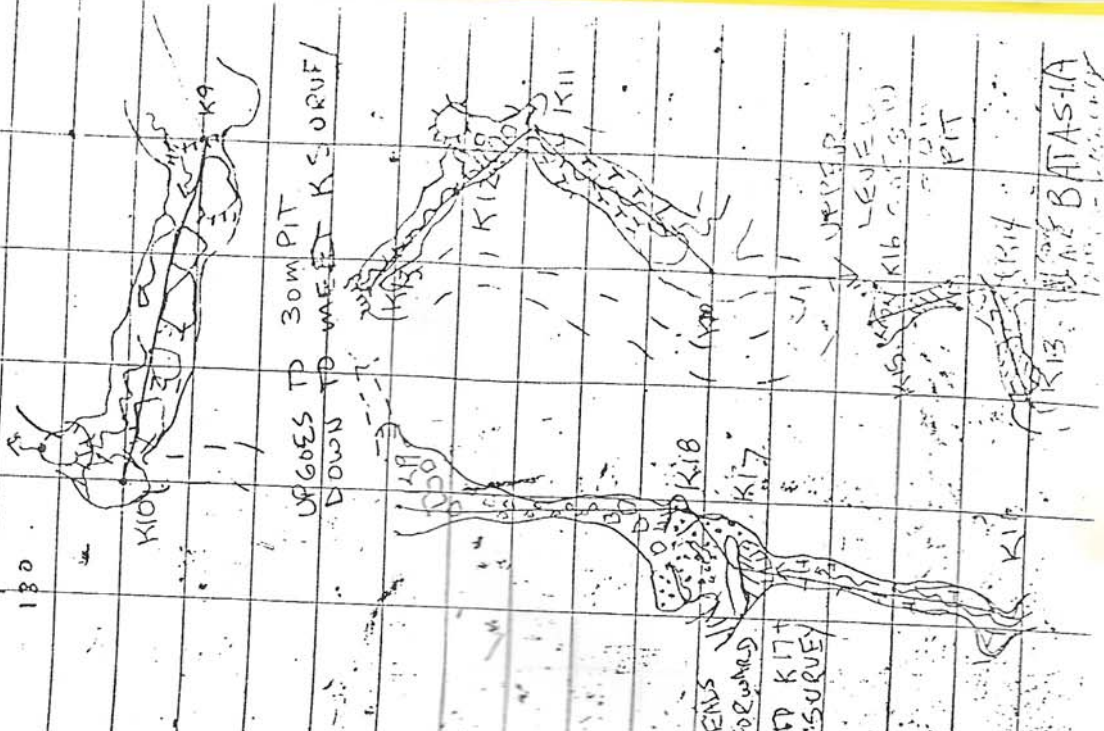


STA	DIST	AZIM	VERT	L/R	C/F
K9				1/2.5	2.3 DROP
K8	8.5	286	+51	—	—
K7	4.1	316	-1	2/1	0.4
K6	2.5	5	-16	1.5/1	2.5
K5	4.5	308	-49	0/2	1.9 1.6
K4	6.5	174	-59	0/2	1.5 2
K3	6.2	219	-25	2/1.5	0 1.3
K2	7.0	170	-33	0/4	1 1.5
K1	10.7	282	-69	0.7/4	4.5 2
K1				0	0 DROP

LOOKING INTO EAST SIDE

(R52)

STA	DIST	AZIM	VERT.	L/R	C/F	315	270	225	180	135	90
K17				3/2	1.8/1.4	315	270	225	180	135	90
K16	7.8	19	-13	1.3/0	5/1.4						
K15	1.9	12.1	-6.5	0/1.3	5/1.6						
K14	5.8	359	-28	1.5/0	1.6/1.5						
K13	4.7	77	-48	0/1.6	3/2						
K12	5.5	349	-10	0/0.8	4/2						
K11	4.0	320	-11	1.8/0	1.5/1						
K10	8.4	42	-35	0/1.5	8/1.3						
K9	14.0	285	-55	0/0.5							



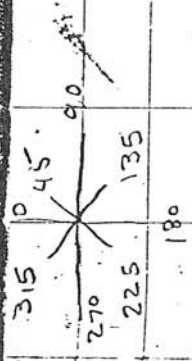
UP GOES TO 30M PIT
DOWN TO WATER K15 ORUF

LENS FORWARD
TO KIT SURVEY

UPPER LEVEL
(K16 CATS)
PIT

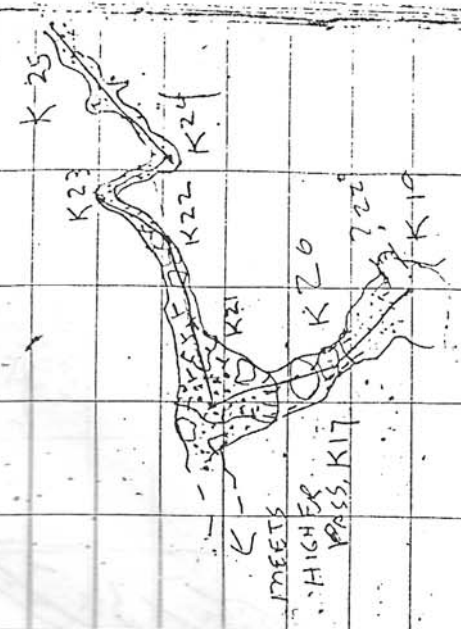
LINE BATASIA

R53



STA	DIST	AZIM	VERT	L/R	C/F
K25	9.4	73	-1	1.2	6
K24	2.6	149	-11	5.5	5.1
K23	2.1	35	-2	4	4.8
K22	6.3	83	-16	3	4
K21	5.8	358	-44	2.5	3
K20	4.2	317	+43	2.3	3
K19	8.2	2	-14	2.5	3
K18	3.9	40	-8	1.2	4
K17					

K23

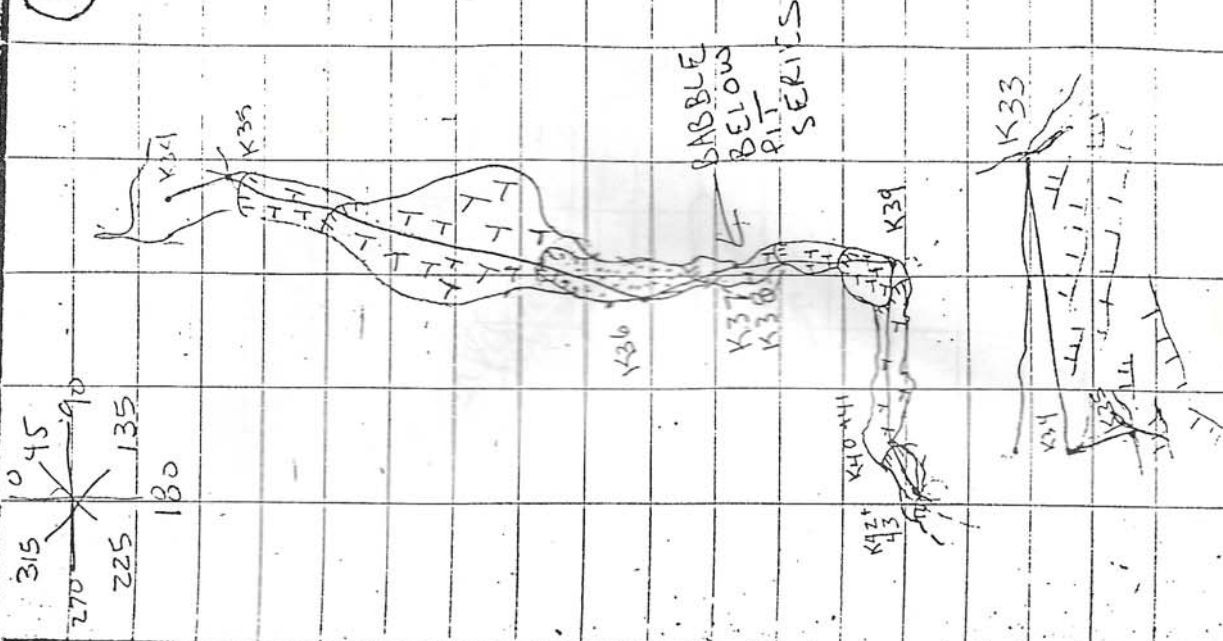


(R54)



STA	DIST	AZIM	VERT	L/R	C/F
K33				1/0	0/1
K32	8.1	327.5	-2.9	1.3	1.5
K31	2.3	296	-4	1.5	1.3
K30	15.4	220	-3.5	1.4	1.3
K29	14.9	194.5	-5	1.4	1.3
K28	5.5	120	-4	1.4	1.2
K27	9.6	84	-4	1.2	1.1
K26	5.5	124	-3	1.2	1.1
K25	8.0	164	-10	1.2	1.1

R55



STA	DIST	AZIM	VERT	L/R	C/E
K41	—	—	—	—	—
K40	12.2	0	-90	0/1	6.5 DROF
K39	5.9	273	-40	0/4	12 1.6
K38	5.2	184	-50	0/2.5	10 10.4
K37	6.7	0	-90	0/7	5 DROF
K36	2.7	151	-45	0/1.6	4 1.2
K35	13.1	190	-56	0/1.2	1.5 DROF 1.31
K34	3.0	167	+4	2/0.3	1.4 0.4
K33	10.6	250	-35	—	—

STA	DIST	AZIM	VERT	L/R	C/F	0	45	90	135	180	225	270	315
K49	—	—	—	0	18+	DROP	—	—	—	—	—	—	—
K48	23.2	248	-21	3	15+	—	—	—	—	—	—	—	—
K47	10.2	184	-34	4	1.4	—	—	—	—	—	—	—	—
K46	9.1	218	-8	5	15+	1.3	—	—	—	—	—	—	—
K45	15.0	302	-4	5	15+	—	—	—	—	—	—	—	—
K44	7.2	276	-4	4	15+	1.3	—	—	—	—	—	—	—
K43	4.8	232	-7	6	15	1.3	—	—	—	—	—	—	—
*K42	20.8	0	-90	—	PASS	DROP	—	—	—	—	—	—	—
K41	2.1	251	-37	—	—	—	—	—	—	—	—	—	—

(R56)

5m ← *
SCALE CHANGE

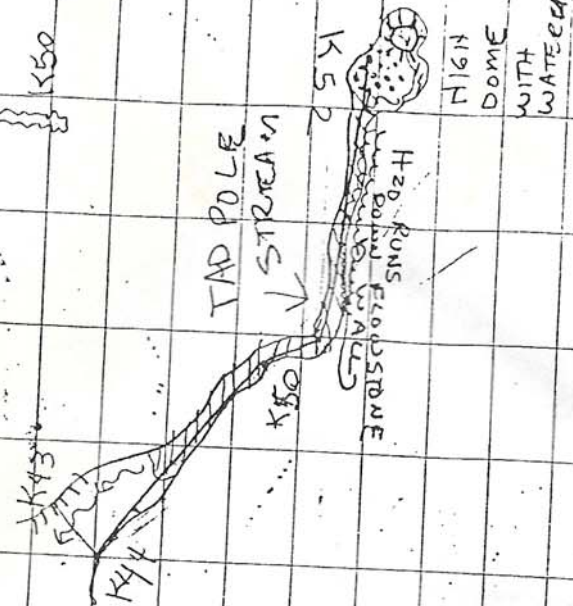
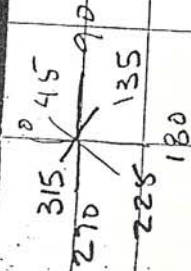
UPSTREAM GOES UP 7.0 m TO ANIMON WATERFALL DUNE 10-15 m HIGH



* SCALE CHANGE

STA	DIST	AZIM	VERT	L/R	C/F
K57					
K56					
K55					
K54					
K53					
K52					
K51	24.5	98	+4	0.5	1.6
K50	5.0	151	+2	1.5	1.6
K44	21.9	128.5	0	0.1	1.4
				6	1.3

(R57)



HIGH DOME WITH WATER

TAD POLE
STREAM
H2O RUNS THROUGH BOTTOM WALL

K50

K52

K54

K50

0.5

1.5

HIGH

6

K44