

10/2/16

---

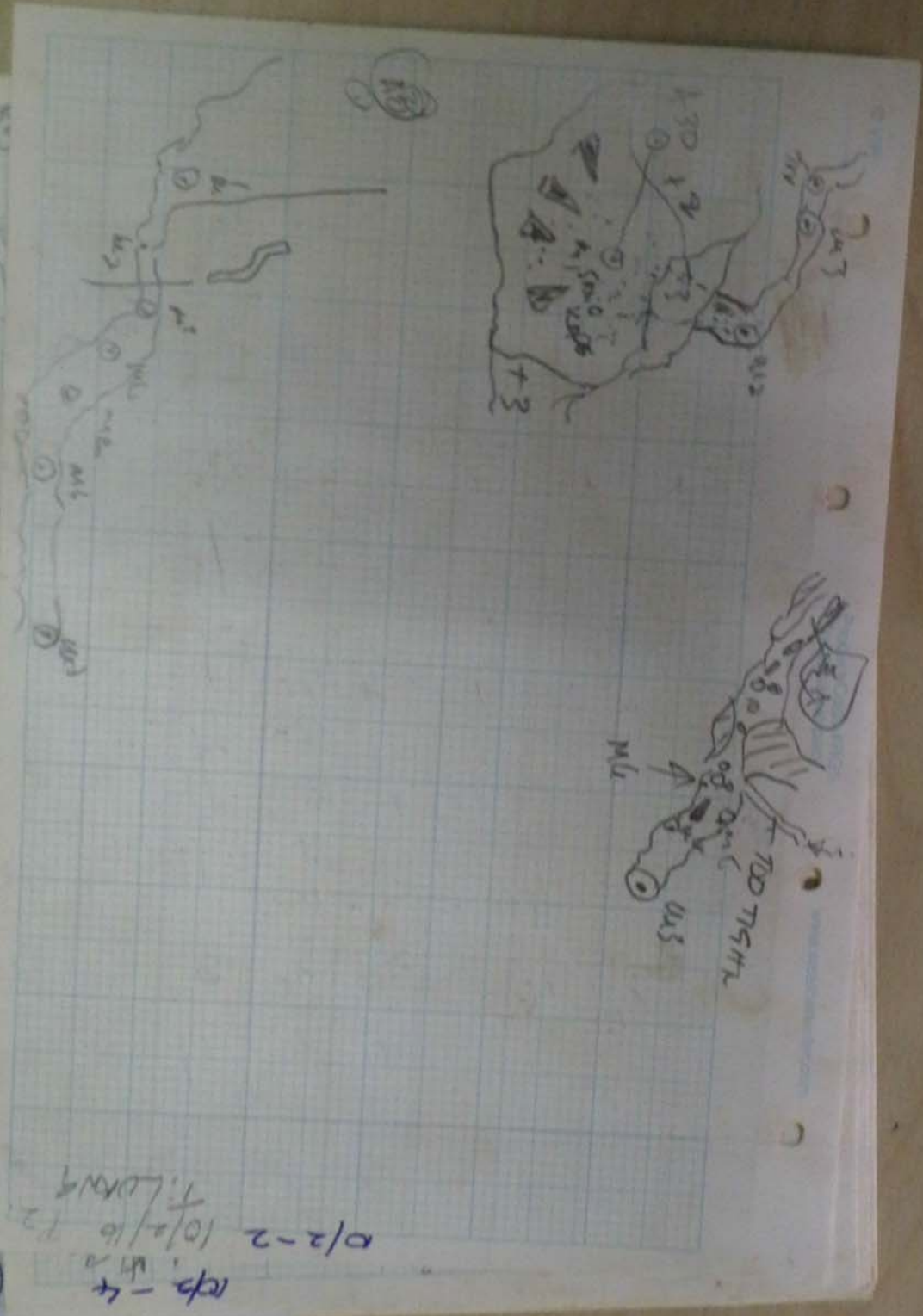
Tham Luang

V Unsworth

R Hayle

---

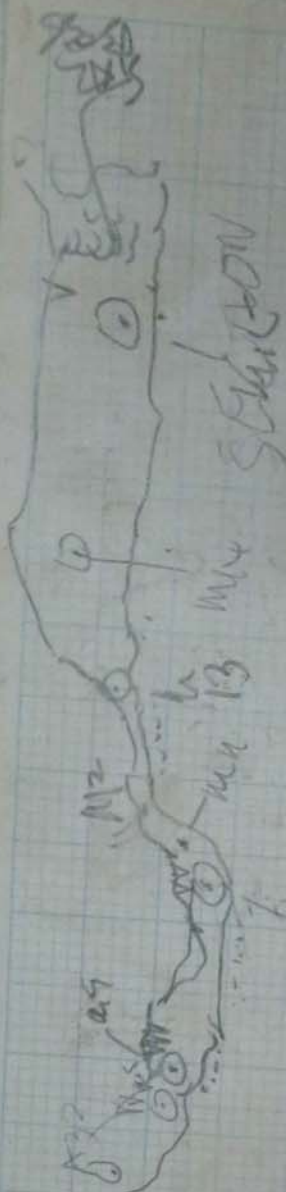




0/2-2 10/2/16 12  
 T. LORNA

10/2-2  
 10/2/16 12  
 T. LORNA  
 route -  
 heavy carving  
 route -  
 Distorted view  
 leave v.s.

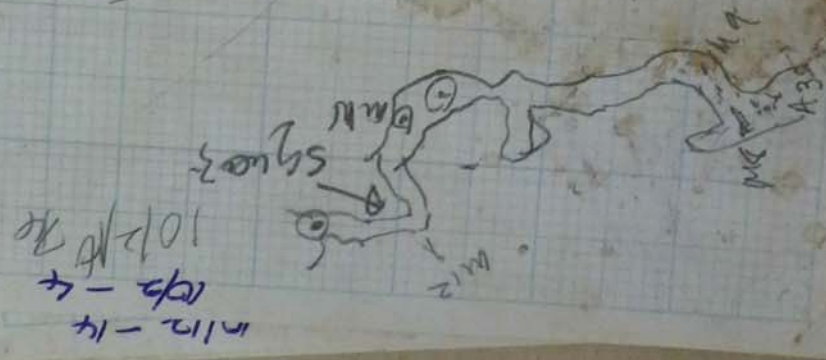




M16  
M15  
M14  
M13  
M12  
M11  
M10  
M9  
M8  
M7  
M6  
M5  
M4  
M3  
M2  
M1



M11



M12-14  
M13-4  
10/2/14

- Rylands
- Rothery
- Sit ne





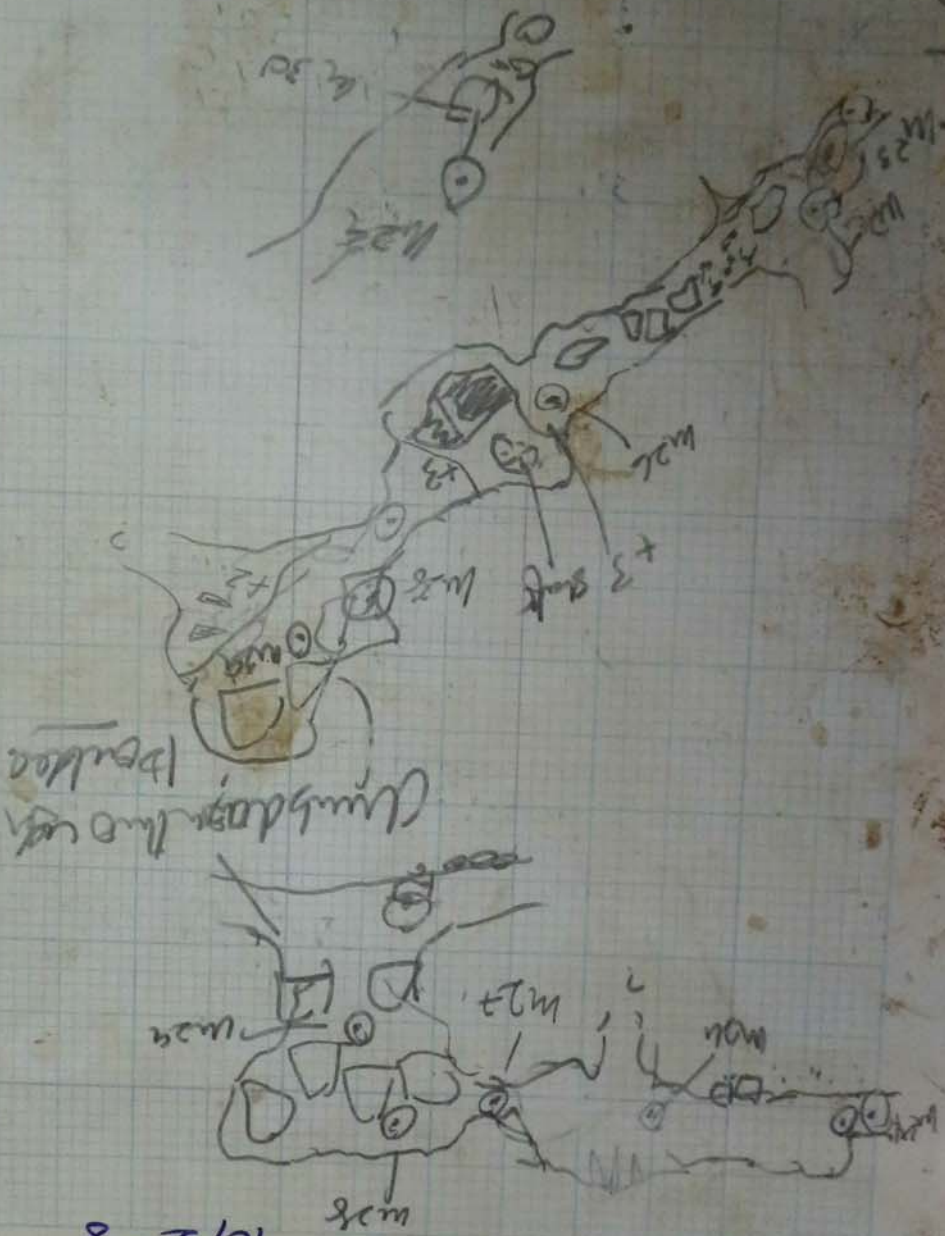
10/2-6  
10/2/16  
P6

- Klyant's  
- Rostov





10/21/16 P. 10/16/16



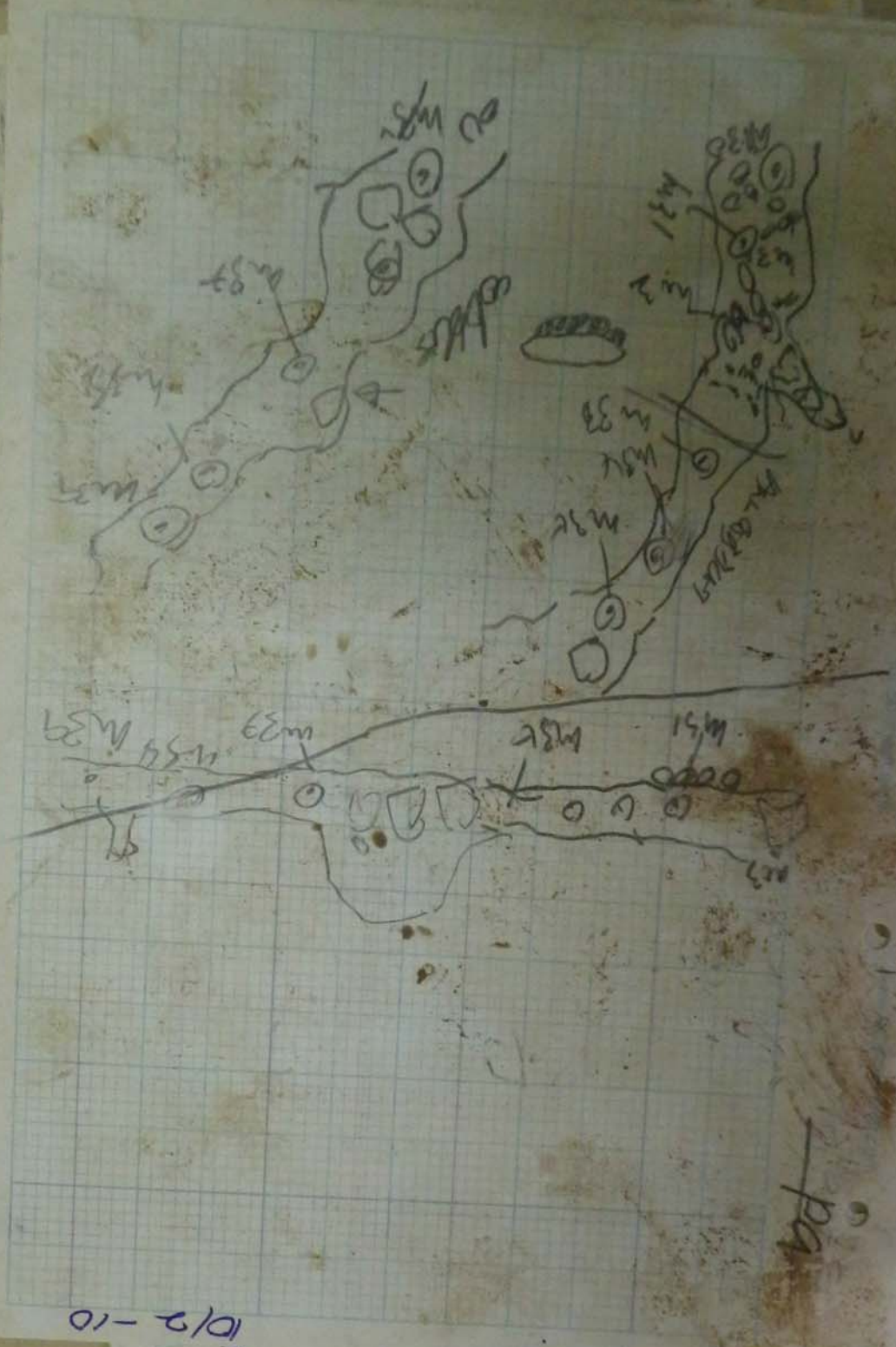
10/2-8

10/12-14

- Klye
- Reali
- Svc

Code	Unit	Value	Unit	Value	Unit	Value	Unit	Value
M30	10	24	1/3	24	1/3	1/8	1/2	1
M31	10	24	1/3	24	1/3	1/8	1/2	1
M32	10	24	1/3	24	1/3	1/8	1/2	1
M33	10	24	1/3	24	1/3	1/8	1/2	1
M34	10	24	1/3	24	1/3	1/8	1/2	1
M35	10	24	1/3	24	1/3	1/8	1/2	1
M36	10	24	1/3	24	1/3	1/8	1/2	1
M37	10	24	1/3	24	1/3	1/8	1/2	1
M38	10	24	1/3	24	1/3	1/8	1/2	1
M39	10	24	1/3	24	1/3	1/8	1/2	1
M40	10	24	1/3	24	1/3	1/8	1/2	1
M41	10	24	1/3	24	1/3	1/8	1/2	1
M42	10	24	1/3	24	1/3	1/8	1/2	1
M43	10	24	1/3	24	1/3	1/8	1/2	1
M44	10	24	1/3	24	1/3	1/8	1/2	1
M45	10	24	1/3	24	1/3	1/8	1/2	1
M46	10	24	1/3	24	1/3	1/8	1/2	1
M47	10	24	1/3	24	1/3	1/8	1/2	1
M48	10	24	1/3	24	1/3	1/8	1/2	1
M49	10	24	1/3	24	1/3	1/8	1/2	1
M50	10	24	1/3	24	1/3	1/8	1/2	1

10/2-9

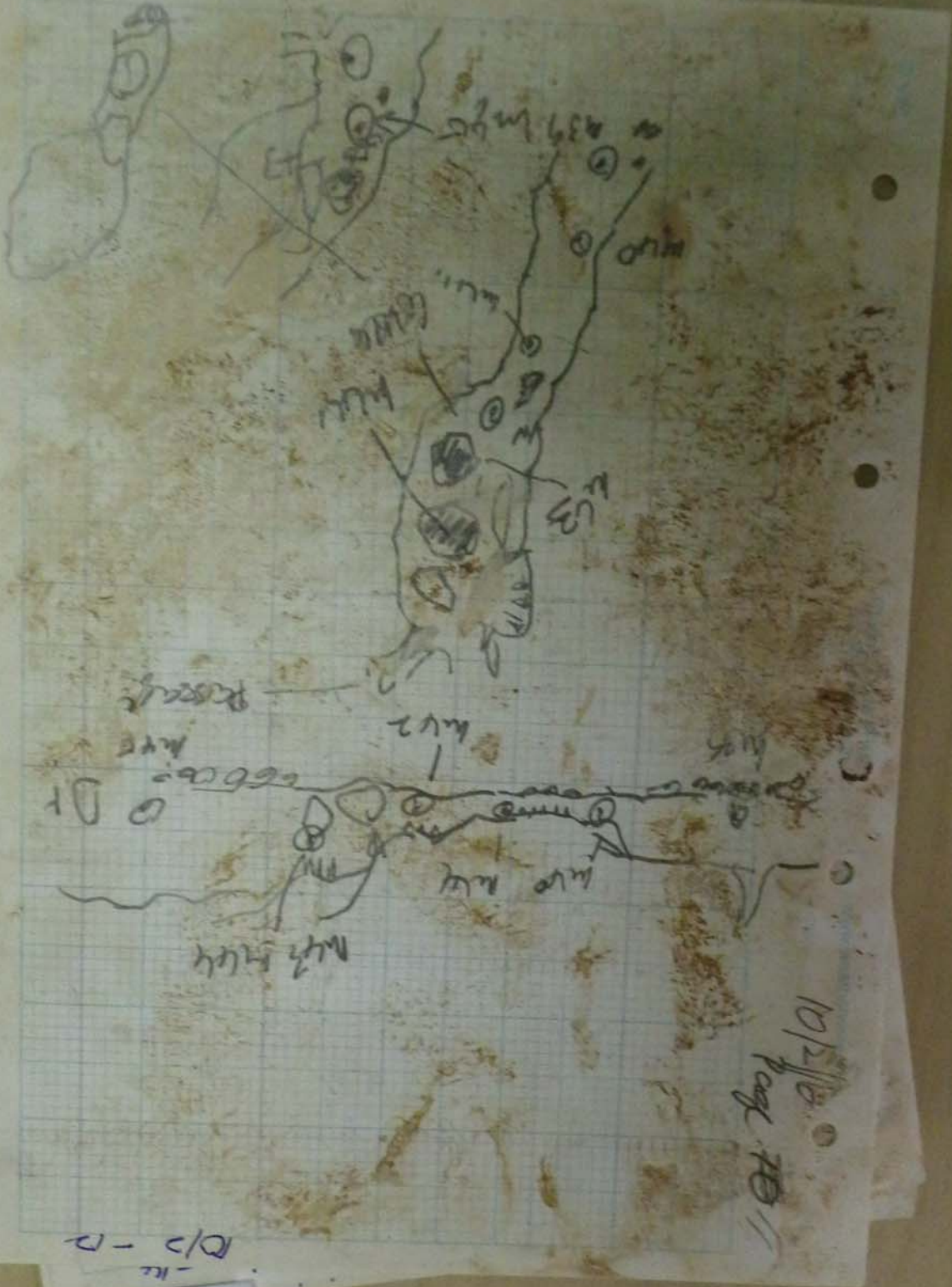


10/2-10

pa

- Klypaul's
- Ravens
- Site ne
- Dossil
- Leaver

10	100%	3	2	1	100%	100%
20	100%	6	2	2	100%	100%
30	100%	9	2	3	100%	100%
40	100%	12	3	4	100%	100%
50	100%	15	4	5	100%	100%
60	100%	18	5	6	100%	100%
70	100%	21	6	7	100%	100%
80	100%	24	7	8	100%	100%
90	100%	27	8	9	100%	100%
100	100%	30	9	10	100%	100%
110	100%	33	10	11	100%	100%
120	100%	36	11	12	100%	100%
130	100%	39	12	13	100%	100%
140	100%	42	13	14	100%	100%
150	100%	45	14	15	100%	100%
160	100%	48	15	16	100%	100%
170	100%	51	16	17	100%	100%
180	100%	54	17	18	100%	100%
190	100%	57	18	19	100%	100%
200	100%	60	19	20	100%	100%
210	100%	63	20	21	100%	100%
220	100%	66	21	22	100%	100%
230	100%	69	22	23	100%	100%
240	100%	72	23	24	100%	100%
250	100%	75	24	25	100%	100%
260	100%	78	25	26	100%	100%
270	100%	81	26	27	100%	100%
280	100%	84	27	28	100%	100%
290	100%	87	28	29	100%	100%
300	100%	90	29	30	100%	100%
310	100%	93	30	31	100%	100%
320	100%	96	31	32	100%	100%
330	100%	99	32	33	100%	100%
340	100%	102	33	34	100%	100%
350	100%	105	34	35	100%	100%
360	100%	108	35	36	100%	100%
370	100%	111	36	37	100%	100%
380	100%	114	37	38	100%	100%
390	100%	117	38	39	100%	100%
400	100%	120	39	40	100%	100%
410	100%	123	40	41	100%	100%
420	100%	126	41	42	100%	100%
430	100%	129	42	43	100%	100%
440	100%	132	43	44	100%	100%
450	100%	135	44	45	100%	100%
460	100%	138	45	46	100%	100%
470	100%	141	46	47	100%	100%
480	100%	144	47	48	100%	100%
490	100%	147	48	49	100%	100%
500	100%	150	49	50	100%	100%

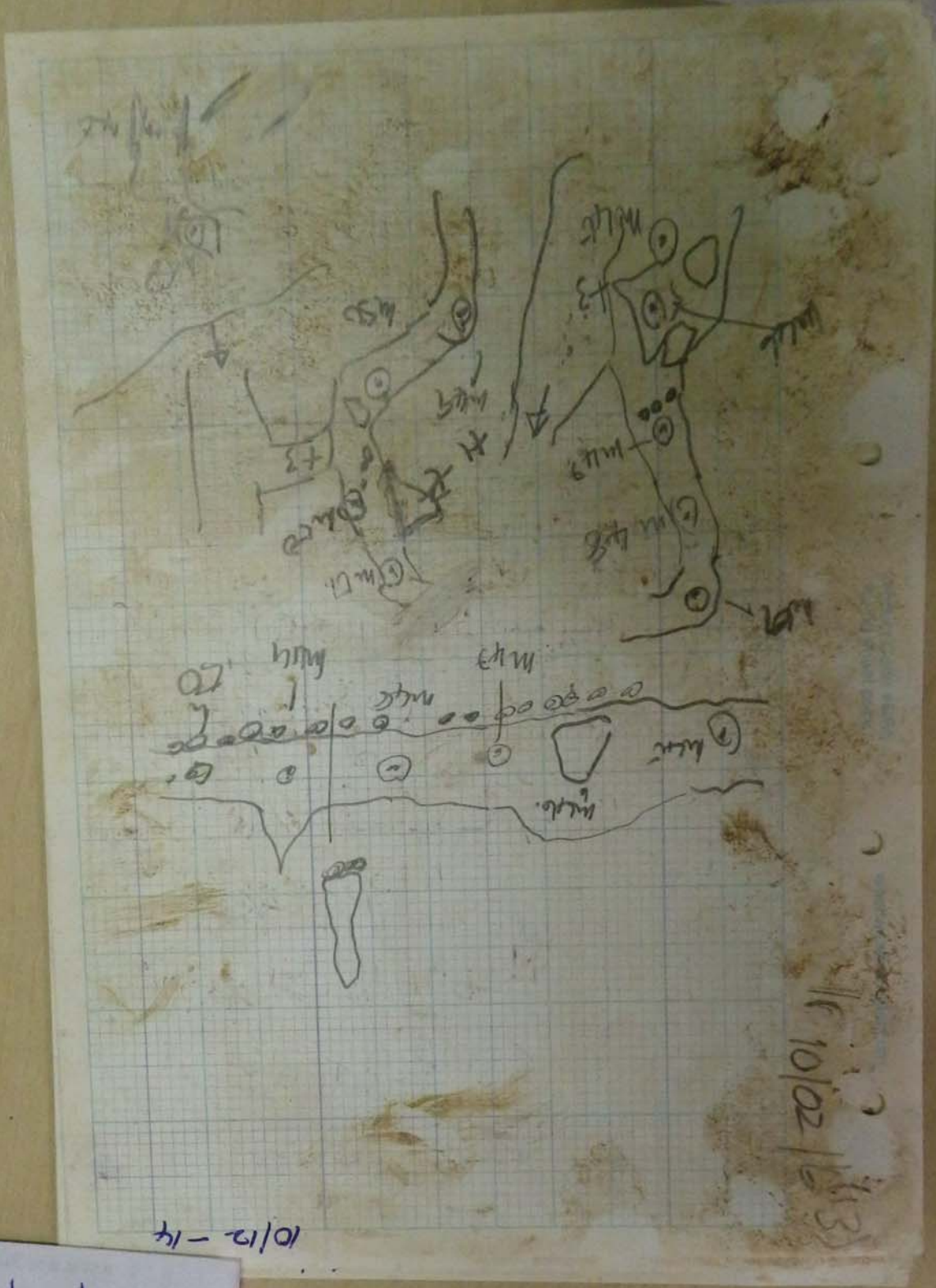


10/2/10  
Page 10

B/D-R

- Kiyomasa's  
 - Robereng  
 - Sit nou  
 - ...





- Kilyans - K
- Rothery ca
- Sit route -

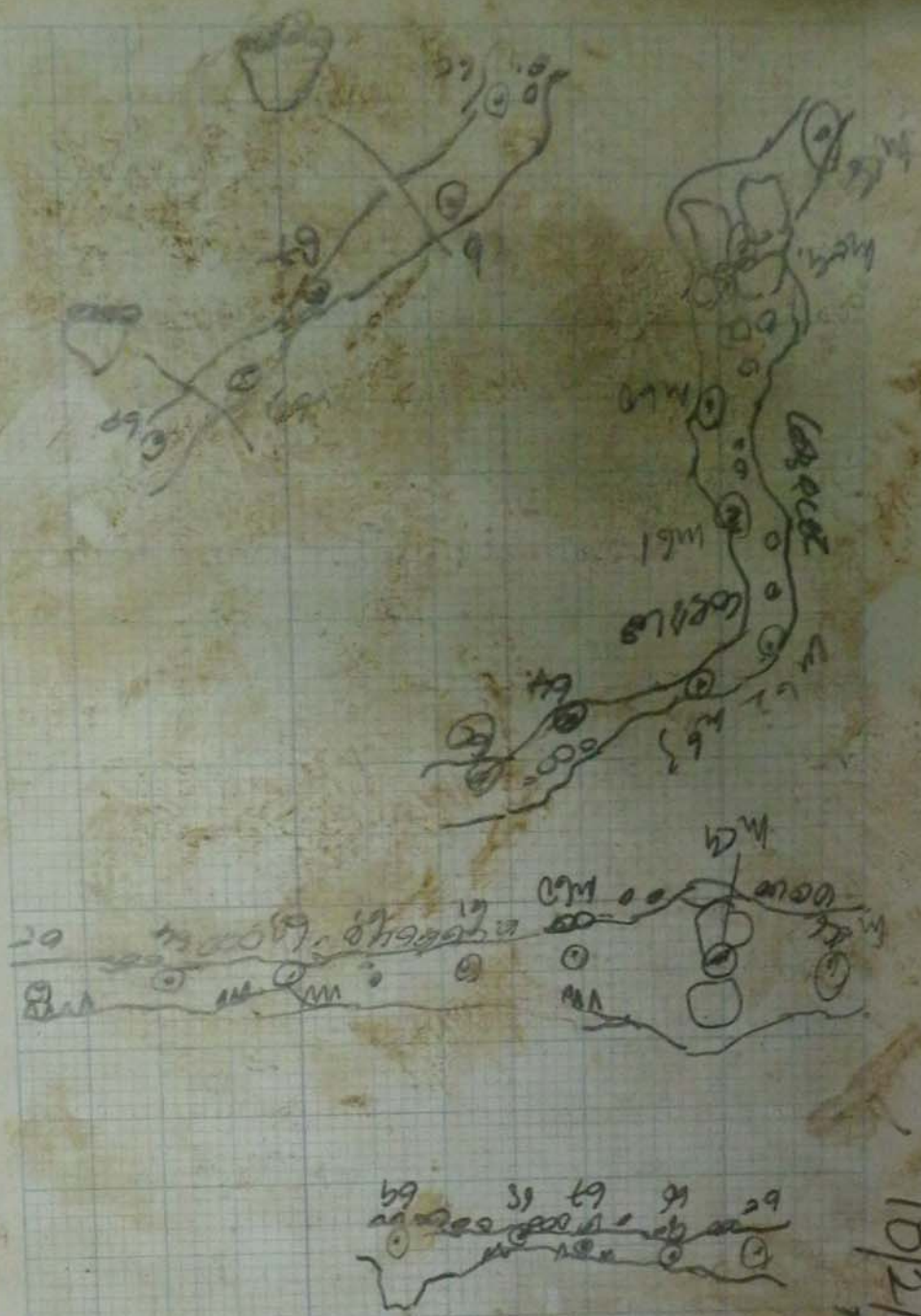
100%	1/2	1/3	1/4	1/5	1/6	1/7	1/8	1/9	1/10	1/11	1/12	1/13	1/14	1/15	1/16	1/17	1/18	1/19	1/20
100%	100%	100%	100%	100%	100%	100%	100%	100%	100%	100%	100%	100%	100%	100%	100%	100%	100%	100%	100%
100%	100%	100%	100%	100%	100%	100%	100%	100%	100%	100%	100%	100%	100%	100%	100%	100%	100%	100%	100%
100%	100%	100%	100%	100%	100%	100%	100%	100%	100%	100%	100%	100%	100%	100%	100%	100%	100%	100%	100%
100%	100%	100%	100%	100%	100%	100%	100%	100%	100%	100%	100%	100%	100%	100%	100%	100%	100%	100%	100%
100%	100%	100%	100%	100%	100%	100%	100%	100%	100%	100%	100%	100%	100%	100%	100%	100%	100%	100%	100%
100%	100%	100%	100%	100%	100%	100%	100%	100%	100%	100%	100%	100%	100%	100%	100%	100%	100%	100%	100%
100%	100%	100%	100%	100%	100%	100%	100%	100%	100%	100%	100%	100%	100%	100%	100%	100%	100%	100%	100%
100%	100%	100%	100%	100%	100%	100%	100%	100%	100%	100%	100%	100%	100%	100%	100%	100%	100%	100%	100%
100%	100%	100%	100%	100%	100%	100%	100%	100%	100%	100%	100%	100%	100%	100%	100%	100%	100%	100%	100%
100%	100%	100%	100%	100%	100%	100%	100%	100%	100%	100%	100%	100%	100%	100%	100%	100%	100%	100%	100%

100%  
100%







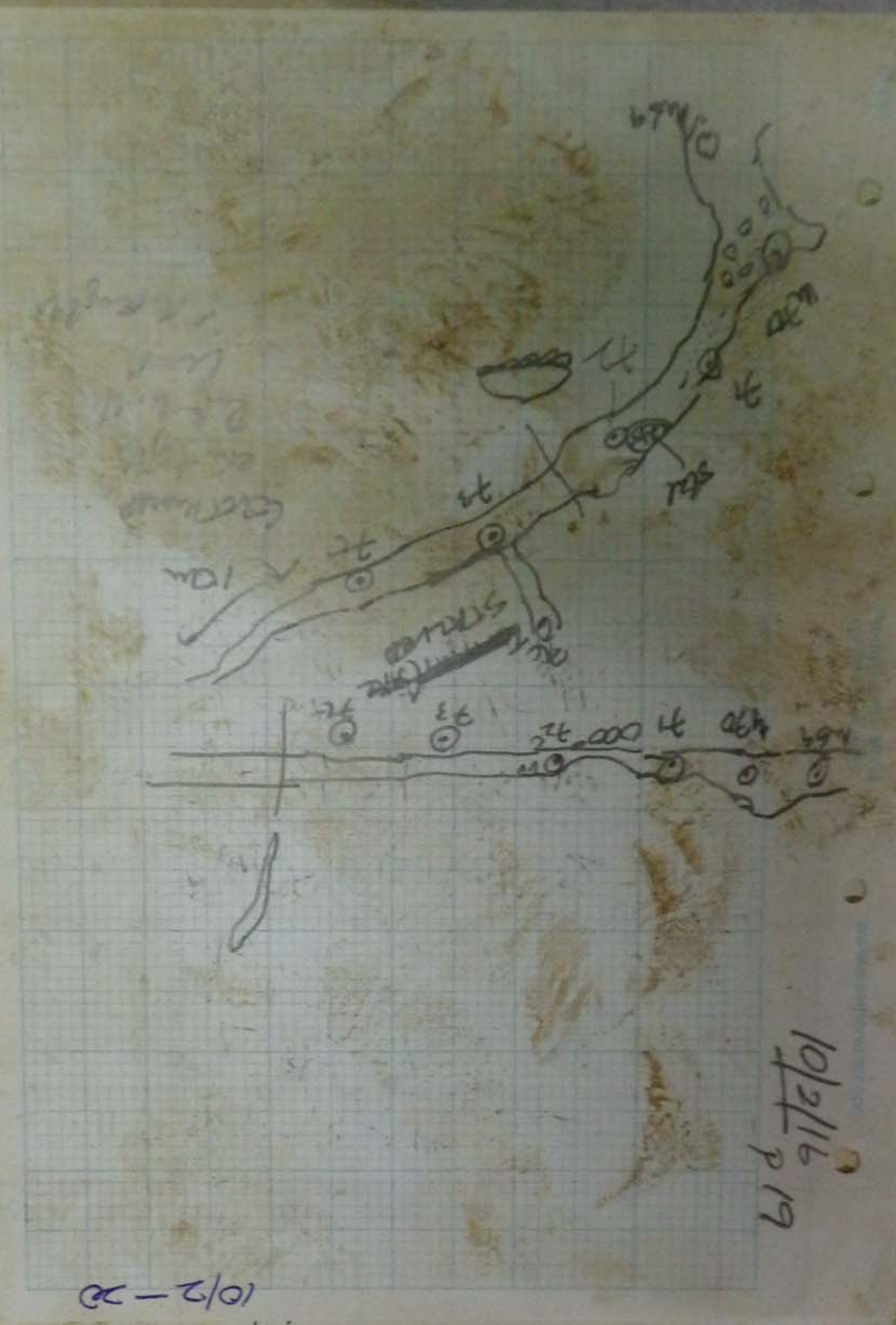


10/2/18 - 18

10/2/18  
7/17

- Kiyas  
- Raleng





- Klyons  
 - Rostang

Case	No.	Dist	Comp	L	R	C	D
M69	M70	5/11	3/11	5/11	1	2/5	4
M71	M72	1/19	3/11	1/2	3	1/5	2
M73	M74	8/17	5/17	1/9	4	2	1/10
M75	M76	9/14	2/14	1/8	4	1/2	0
M77	M78	5/10	3/10	1/5	1	0/2	0/10
M79	M80	5/30	26/19	1/2	1/2	2/2	1/1
M81	M82	3/17	26/11	1/2	1/2	0/1	1/1
M83	M84	3/54	22/2	1/2	4	3	0/6
M85	M86	6/59	24/2	2	1/5	1	1

19 - 21  
0/2 - 21

- Khyber  
- Roshni  
- Sult  
- Das  
- Ura

10/2 → 22

Page 21

