

10/2/16

Tham Luang

V Unsworth

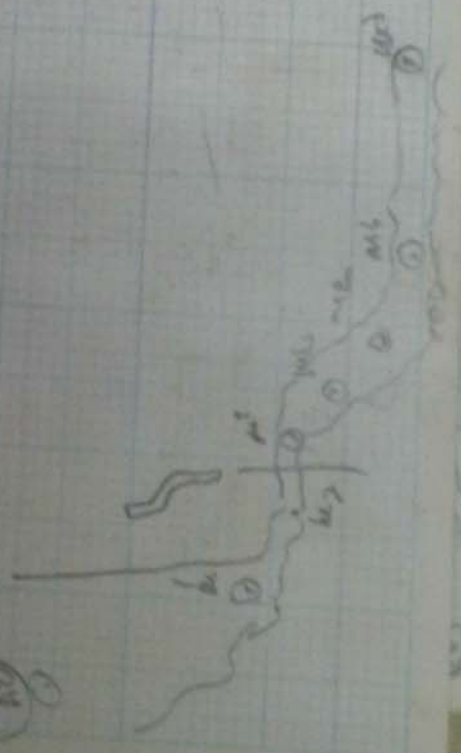
R Hayle

FROM	TO	DISK	COND	CHNO	L	R	U	D	P
A30	m1	4/43	15/10	46/4	P	3	6	0/3	
m1	m2	3/9	35/5	24/8	1	0/6	0/6	0/1	TLUANC
m2	m3	3/26	338/1	46/5	0/8	0/5	0/5	1/5	
m3	m4	1/6	5/6	35/2	1	1	1/8	1/0	
m4	m5	2/13	92/5	44/11	1	0	0/8	0/1	10/2 1/6
m5	m6	2/8	342/8	12/4	0/2	P	1/2	0/4	
m6	(a7)	2/24	354/10	0/2	1/0	1/2	0/8	0/6	
	if needed								

0/2-1

10/2-4

10/2-2 10/2/16 P2
T. LUANG



~~10/2-4~~

~~change casing~~

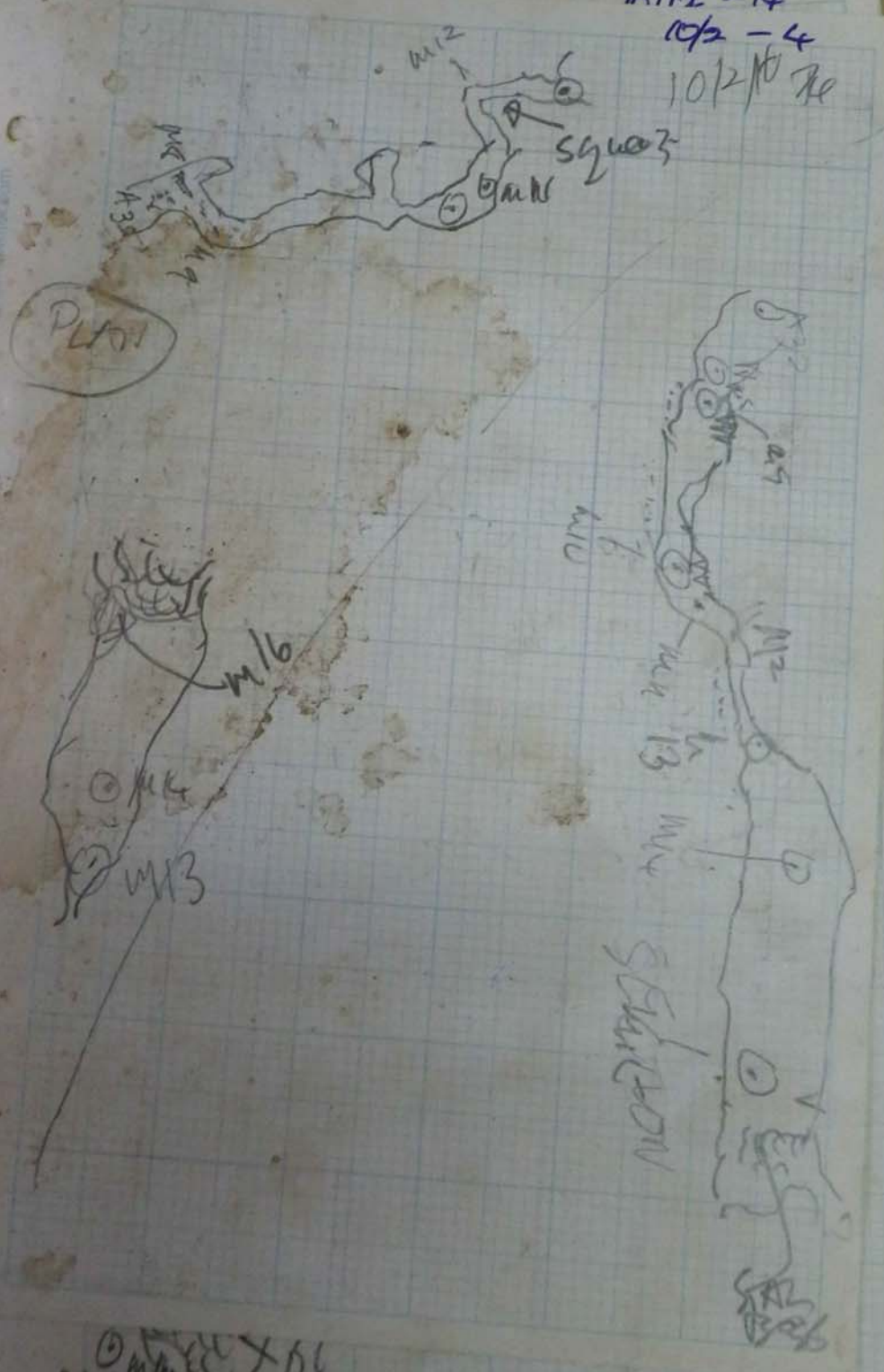
~~course~~

~~Download map~~
~~leave v.s.~~

<u>File</u>	<u>TO</u>	<u>Dist</u>	<u>Comp</u>	<u>Chino</u>	<u>L</u>	<u>R</u>	<u>U</u>	<u>D</u>	10/2 - 3
A33	M8	2/86	168/6	-21/2	0/6	0/8	1	0/4	0
M8	M9	1/86	248/8	-15/6	0/5	1/1	0/3	0/6	
M9	M10	4/72	200/10	13/2	1	1/1	1	0/4	0
M10	M11	1/65	223/7	6/10	0/8	1	1/4	0/3	0
M11	M12	1/57	148/11	+23/6	0/4	0	0/3	0/2	0
M12	M13	1/89	244/12	+26/9	0/8	0	2	0/4	0
M13	M14	4/107	186/11	+30/7	2	1/8	2/4	3/0	0
M14	M15	13/49	148/18	-1/8	1/0	7/0	4/0	1/6	0
M15	M16	5/16	193/10	-10/2	2/0	0	2/0	1/2	0

- Khyabals
- Raahenags
- Sut ne

m/12 - 14
 10/2 - 4
 10/2/10/7e



m/16 m/15 m/14 m/13 m/12 m/11 m/10 m/9 m/8 m/7 m/6 m/5 m/4 m/3 m/2 m/1

- Khyber
- Kohat

10/2-6 10/2/10
Pb

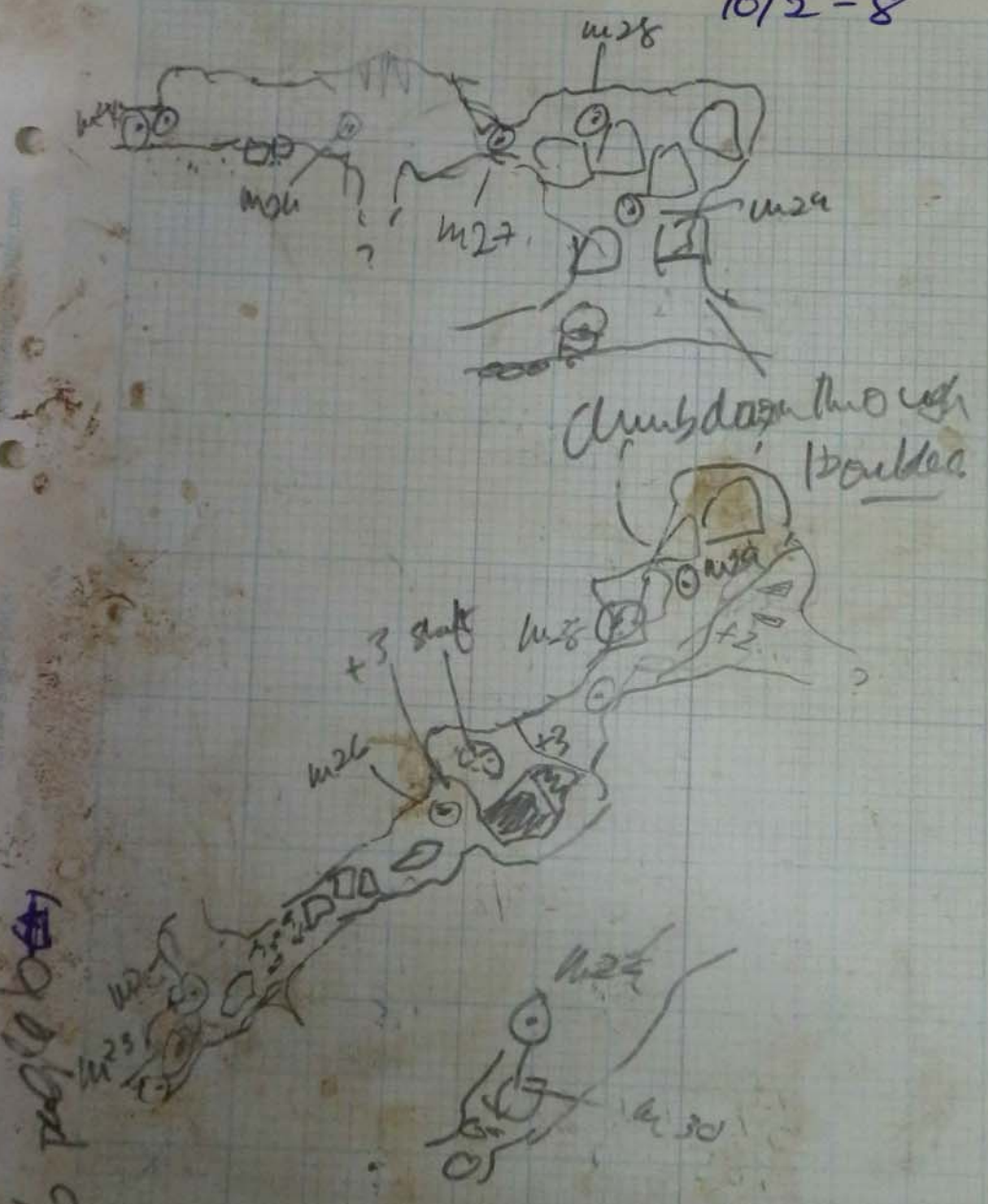


- Klyde
- Reed
- Svt

3

10/12-14

10/2-8



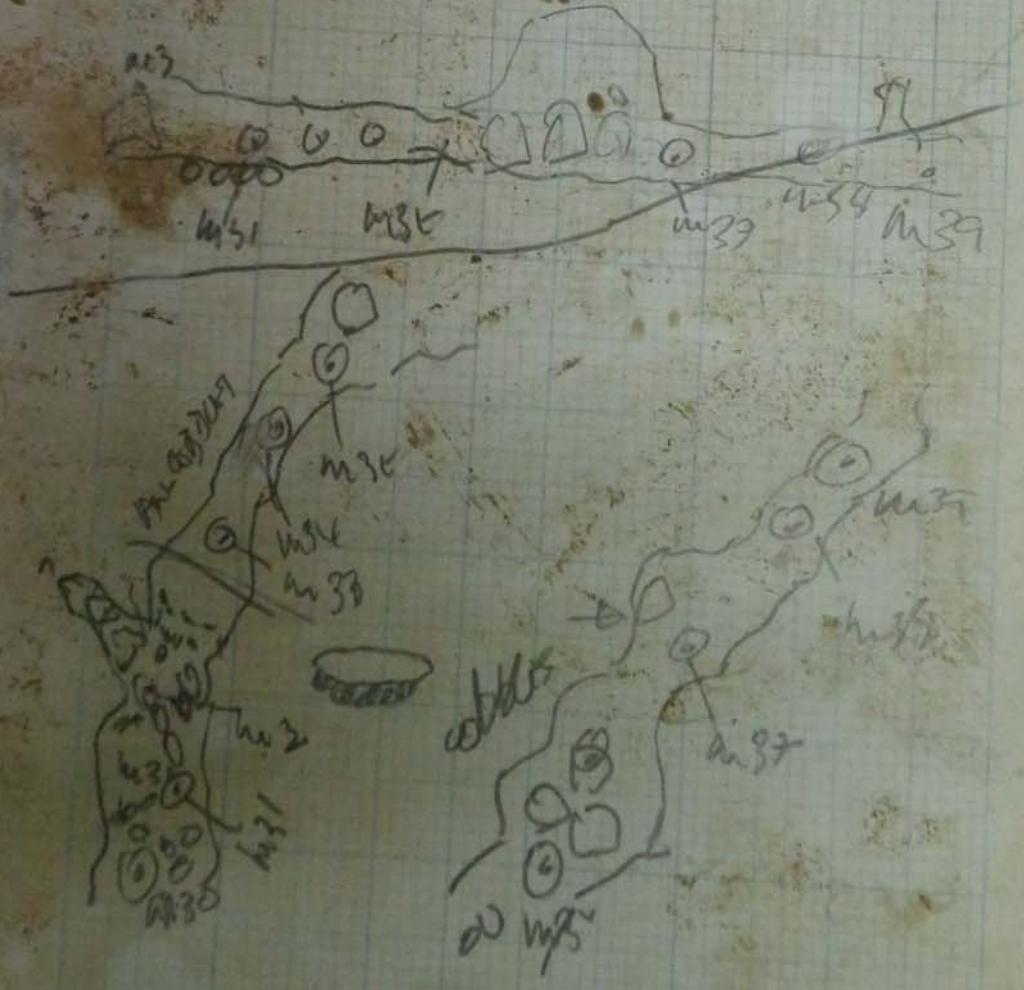
								10/2 - 9	
$\frac{1}{2}$ FREQ	T ₀	DIST	COMP	CLIND	L	P	O	D	
m30	m31	2/37	224/3	15/9	1/8	1/2	1	1	0
m31	m32	85/16	197/14	6/7	P	1/2	9/8	3/10	0
m32	m33	4/74	250/1	2/2	2	2	9/4	1/2	0
m33	m34	5/02	264/5	1/0	3	2	0/4	0/9	0
m34	m35	11/26	207/8	3/9	3	3	2/5	1/5	0
m35	m36	3/79	224/0	2/2	3	2	4	4	10/1
m36	m37	3/22	217/1	8/2	2	1	2	0	0
m37	m38	1/08	198/6	4/0	1/8	2	+	+	0
m38	m39	5/65	181/7	1/9	3/0	2/0	4/0	1/3	0

- Klypans
- Rookery
- Site no
- Dashed
- Line

10/2-10

pa

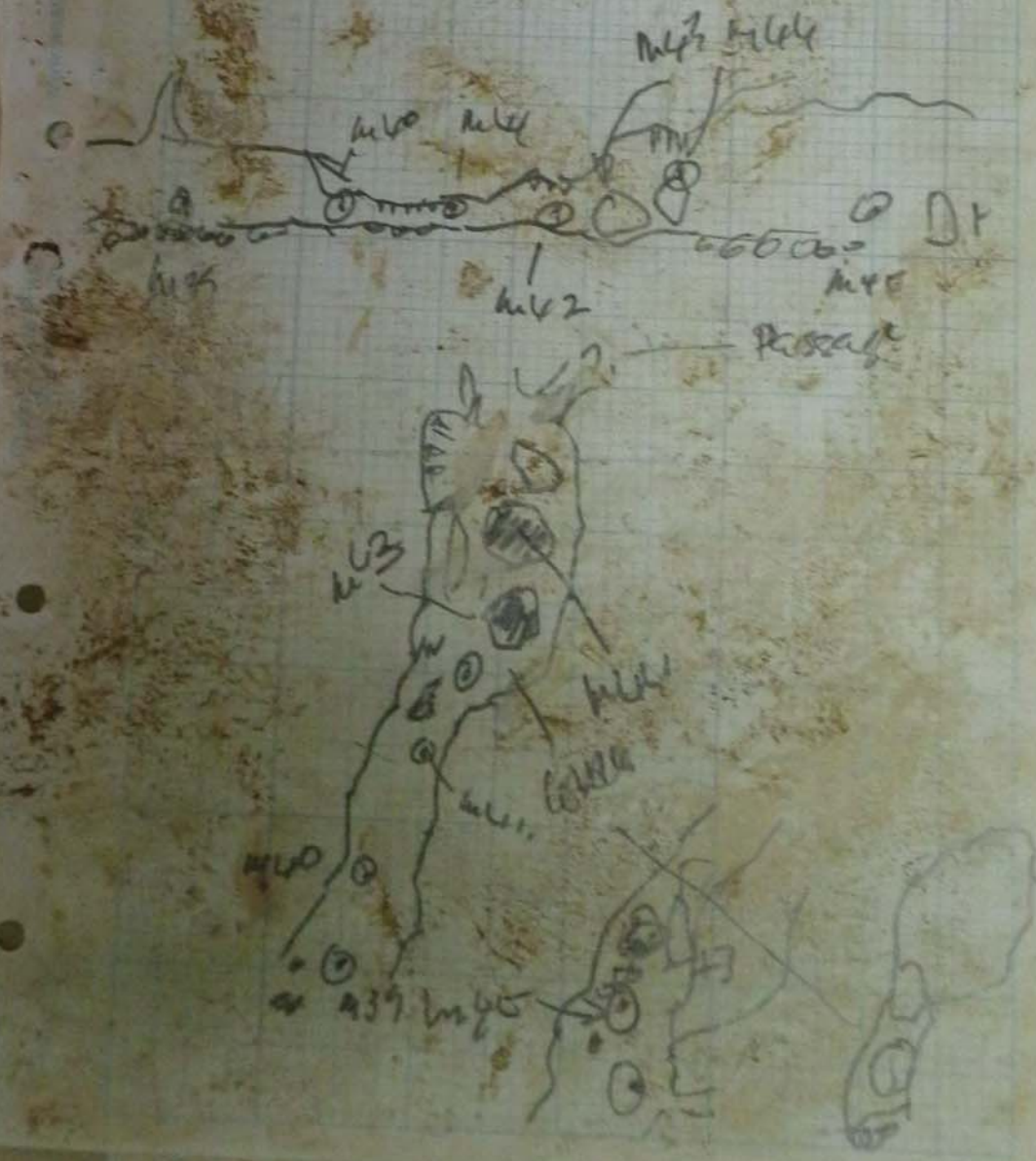
113



- Khyber
 - Pashtun
 - Sikh
 - ...

10/2/10
 Page 70

- 12
 10/2 - 12



10/02/163

10/12-14

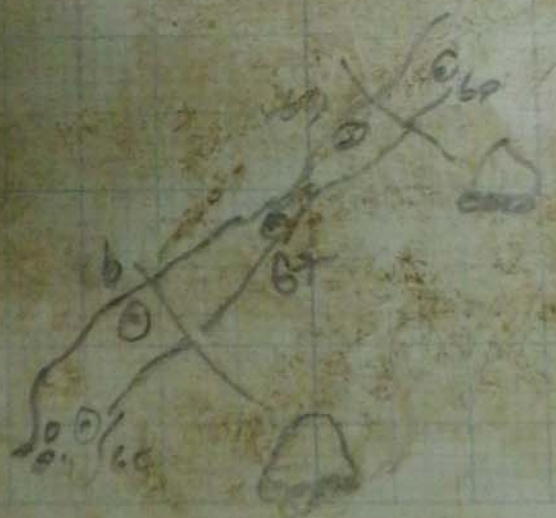
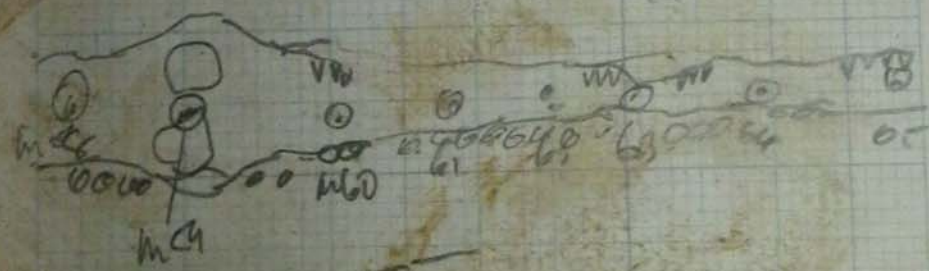
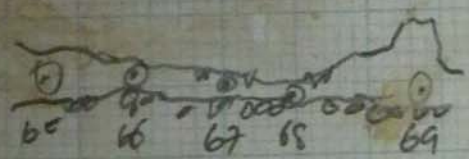


- Khyants -
- Recharge ca
- Sit route

- Khyats
- Rakheng

10/2~~18~~ - 18

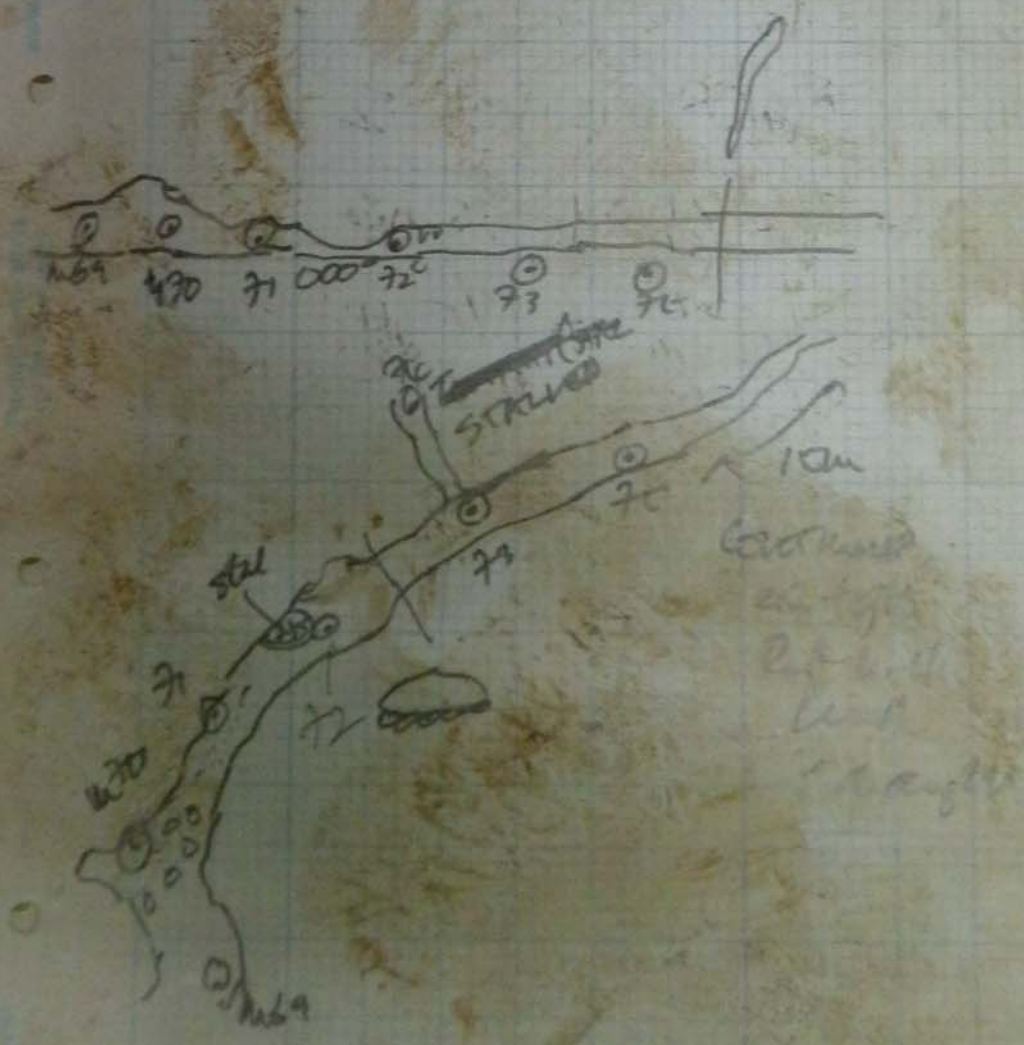
10/2/16
7/17



- Khyats
- Recharge

10/2-20

10/2/16 p 19



Team	Feos	no.	045	comb	chgo	L	R	U	D	
M69	M50	M70	5/44	32/11	5/4	1	2/5	4	1	
M72	M76	M77	7/92	35/11 35/77	5/7	3	1/5	2	0/5	00
M74	M78	M78	12/49	33/8	1/2	1/2	3	0	1/1	700
M77	M78	M79	8/74	35/10	1/9	4	2	1/5	0/3	
M78	M79	M80	9/14	32/2	1/8	1/5	4	1/2	0	
M80	M81	M81	5/100	310/4	0/6	1/5	1	0/2	0/0/2	9/2/16
M81	M82	M82	5/30	26/19	0/8	1/2	2/2	0/2	1/1	10/2/01
M82	M83	M83	3/97	26/10	4/8	1/2	1/2	0/1	1/1	
M83	M84	M84	3/54	38/2	0/7	4	3	0	0/6	
M84	M7	M7	6/59	34/10	2/2	2	1/5	1	1	

L 19
10/2 - 21

- Khyber
 - Roshan
 - Sult
 - Das
 - Ula

10/2 → 22

Page 21

