

89  
 ③  
 x  
 ①  
 slope entrance

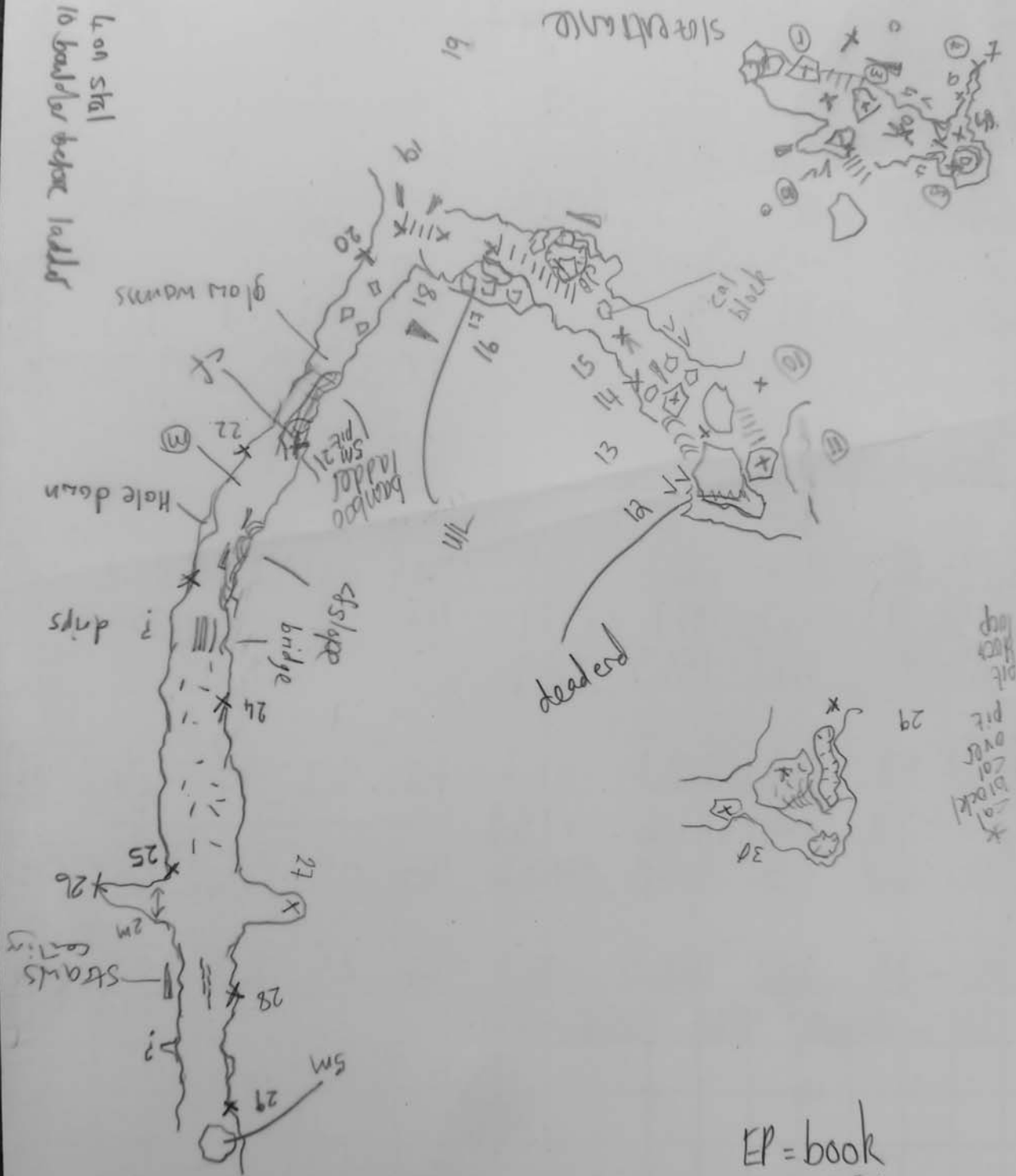
4.00  
 10.00

Ko hanku, Mai keaw cave U D L R  
 Monday 23<sup>rd</sup> December 2019  
 length

0/GPS - 1	5	245.6	14.5						F
1-2	2.9	036	16.5	0/1.9	1.5	0	0.6		R
2-3	4.6	020	38.2	3.6	0.5	15.4	2.5		R
③-4	6.7	318.2	-28.7	5.4	0.9	2.5	2.3		R
4-5	2.8	264.6	-5.6	2.4	1.4	2.3	1.6		R
⑤-6	1.5	161.0	34.2	1.2	1.0	0.7	0.3		R
6-7	6.4	010.3	-25.4	—	—	—	—		F
⑤-8	5.9	312	-33	2.6	1.3	2.1	2.2		R
8-9	2.1	089	+27.6						
3-10	3.3	118.3	-0.9	4.5	1.2	3.0	1.1		R
10-11	5.8	44.7	34.4	12.0	1.4	2.0	1.7		R
11-12	5.9	278	26.4	7.5	1.2	3.9	0.9		F
12-13	2.6	137	-21.9	7.4	1.7	4.2	1.2		R
13-14	4.4	155	14.4	1.3	3.0	0.7	0.3		R
14-15	3.5	154.7	23.3	0.2 3.3	1.5	3.7	1.4		R
15-16	5.5	143.9	09.6	8 sky	0.5	2.0	7.9		R
16-17	5.2	84.8	-49.0	2.0	2.6 5	2.8	0.2 9.6		R
17-18	4.5	73.9	-1.6	1.2	1.0	0.4 2	3.5		R
18-19	2.5	79.5	31.4	5.8	4.8	9.8	17		R
19-20	15.3	30.9	25.7	9.2	1.8	0	3.2/6.5 <sup>R</sup>		
20-21	9.6	17.5	+4	0	0.9 1.8				
21-22	5.3	34.3	5.7	13	1.4	0	2.2		R
22-23	18.1	16.3	-1.1	16.2	1.8	0	4.8		R
23-24	17.3	03.5	-8.3	7.9	1.5	3.1	0		R

24-25	13.4	34.0	0.5	4.5	1.6	0	2.6	
26-25	7.0							
25-27	14.0	129.3	10					
25-28	12.2	13.7	12.3	1.4	1.0	2.5	0	R
28-29	22.2	028	14.4	2.6	1.3	3.7	1.3	R
29-30	5.3	083.3	-9.0	1.2	1.0	1.0	3.0	R
30-31	8.9	122	14.2	0.6	1.2	0.2	3.2	R
31-32	14.1	125.2	001	2.2	1.6	8.0	0	R
32-33	6.2	95.4	-6.4	8/14	1.7	12.0	9/3	R
33-34	10.8	85.8	3.8	14.5	0.8	8.0	9/9	R
34-35	16.7	43.5	-2.3	12.2	1.5	0	8.8	R
35-36	36.0	28.8	-3.9	8.8	0	15.8	8.3	R
36-37	20.9	37.0	57.7	5.0	1.3	0	5.5	R
37-38	8.0	23.3	11.9	1.6	0.7	2.4	0.5	R
38-39	8.7	75.6	+36	1.0	0.1	3	1.2	R
39-40	2.6	end						
39-41	3.7	205.1	9.2	0	0.6	0.7	0.6	R
41-42	7.4	186.5	12.9	0.5	1.1	1.3	1.8	R

Lean Sta  
10 basals before ladders

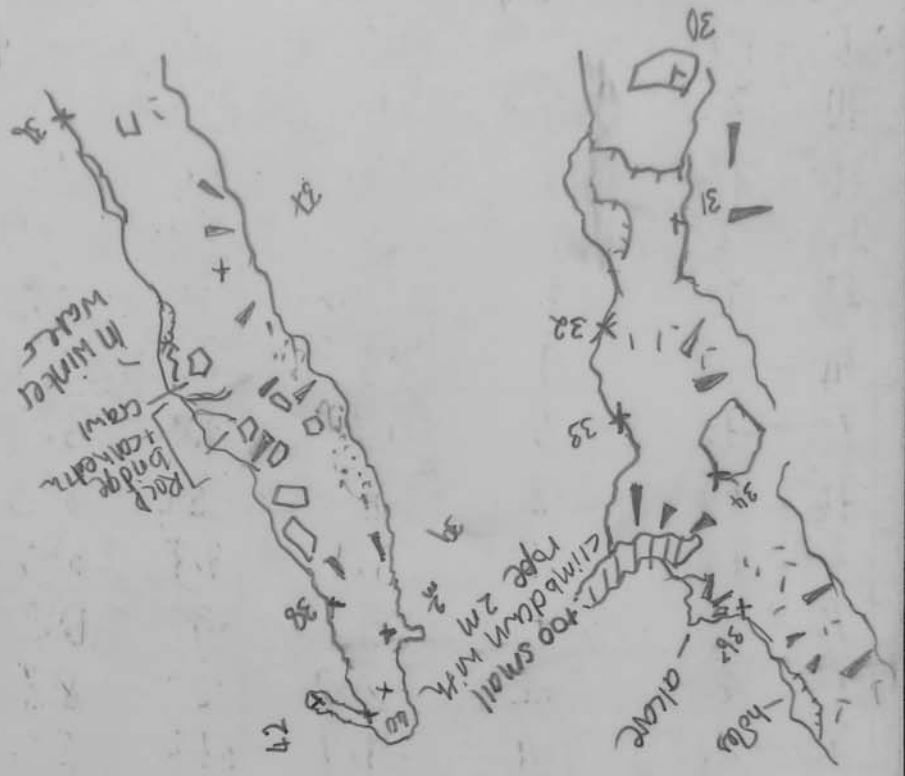


16 on rock next to tree. Daylight ent.

16 - behind 7/8 ladder mag

EP = book  
MC = Diskox

Mai keaw  
Cave



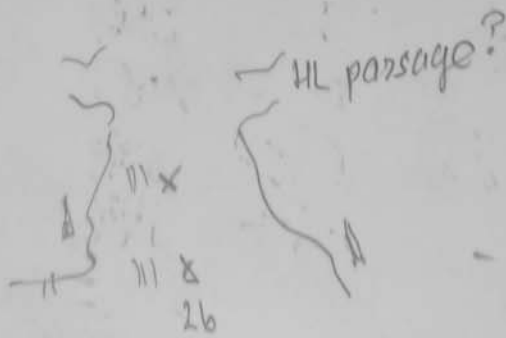
Handwritten signature or initials.



0.4 x 1.4  
CHAMBER

CHAMBER AT END = (7.8, 0.8, 14, 5)

bad air  
at end  
of left  
passage



calcareous mud slope



26th December - Mai Kean, KO Lanta  
2019

U D L R

19	=43	17.2	348	-45.4	7.4	4.2	2.9	<sup>1.03</sup> 12.6
43	-44	9.8	280.3	-13.0	5.7	0.4	2.4	1.0 <u>drift line</u>
<del>44</del>	-45	8.7	297.7	-2.7	3.1	<sup>10 up</sup> night	1.6	0.7 1.8
					65°			
45	-46	8.8	291.4	-15.2	0/3.5	1.5	1.8	1.0
46	-47	1.1	303.5	+15.0	2.2	1.3	0	1.3
47	-48	5.9	274.1	+1.5	0	1.2	0.5	0.3
<del>48</del>	- <del>49</del>	<del>2.1</del>	<del>319.5</del>	<del>-19.5</del>				
48	-49	2.5	314.9	-12.5	0.8	0.5	0.7	1.1
49	-50	5.3	13.6	+0.2	6.0	0.16	<sup>0.5</sup> 2.0	0.4
(50)	-51	20.2	22.5	+1.1	2.9	1.6	1.9	0
(51)	-52	8.3	286.9	+1.3	3.8	1.1	0	2.7
<del>501</del>	-53	4.4	99.5	-18.1				
53	-54	4.9	180.0	-7.6	3.0	1.0	<sup>0</sup> 0.7	2.2
54	-55	16.3	147.1	+2.1	0.4	0.2	1.8	0.4
(55)	-56	1.7	215.9	+32.8	0.8	0.4	0.2	1.0
56	-57	11.7	59.8	+9.8	1.0	1.2	0	1.5
	57				1.5	1.5	1.0	0
(56)	-58	4.9	193.6	+2.8				
58	-59	10.9	225.3	-1.0	1.9	1.0	0	0.8
59	-60	4.1	199.2	+2.1	1.7	1.0	1.4	0
60	-61	5.9	233.0	-11.2	0.6	0.8	0	0.7
61	-WATER	3.0						
50	-63	30.8	046.1	-4.3				
63	-64	8.2	200.6	+8.2				
(61)	-65							

20 - 21	3.0	247.8	+3.9	4.0	1.25	out	1.85
21 - 22	5.0	242.6	+54.7	1.4	0/0.77	out	3.1
22 - 23	12.27	300.5	+14.4	0/3.5	0.4/4.25	1.55	1.3
22 - 24	12.45	189.7	-8.5				
24 - 25	4.76	207.1	-32.9	1.8	1.53	0/2.78	0.69
25 - 26	4.37	295.1	+2.0	1.1	1.29	3.11	1.62
26 - 27	5.27	163.8	+22.8	skj	1.61	5/44	0
27 - 415	3.18	205.5	-14.9				

26 Dec 2019 Mai keaw, ko Lantu

65b

64 - <del>65</del>	22.0	325.6	-3	4.1	1.3	2.3	0
65 <sup>b</sup> - 66	11.0	292.5	-3.9	6.0	1.4	3.6	0/4
66 - 67	12.0	293.4	-2	6.0	1.1	1.3	3.0
67 - 68	9.7	330.0	-1.3	7.0	1.1	0.2	1.8
68 - 01 too small	2M						

66 - 70	12.1	334.8	+4.5				
70 - 71	5.0	110.1	+17.8	5.3	3.0	1.8	1.2
63 - 72	8.7	004.4	-0.7	0.8	1.0	0.2/6.9	0/block

Thursday 26<sup>th</sup> Dec 2019

Mai kean Cave, Kolanta

MC = Disrox

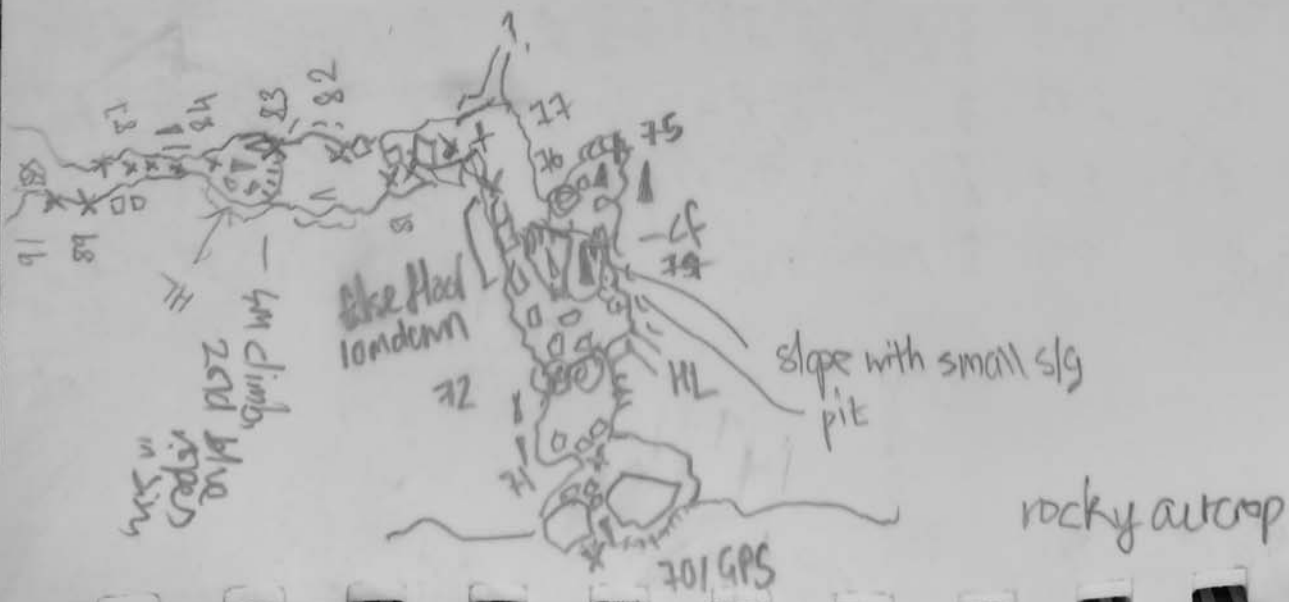
JW = station

EP = sketching

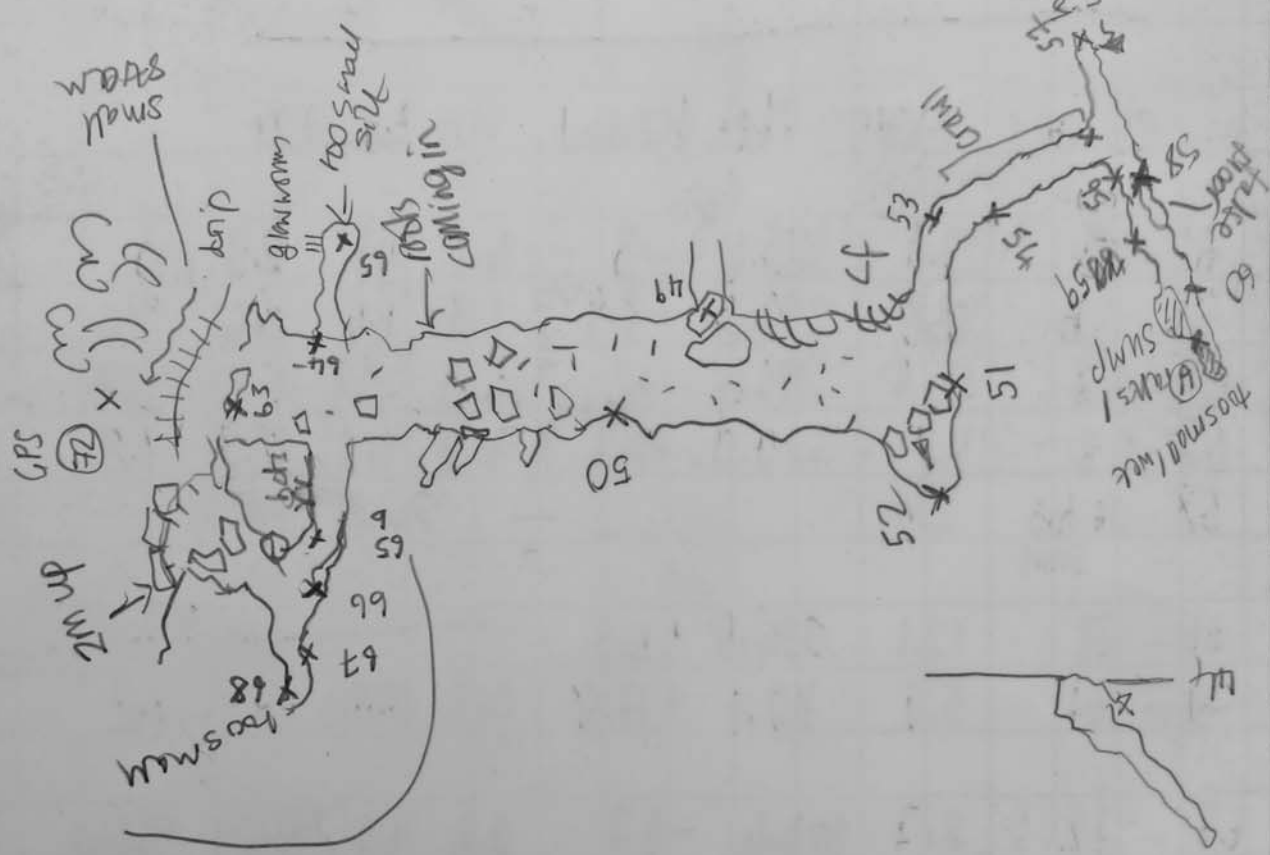
SPS					u	D	L	R
70	- 71	4.6	225.1	-26.2	out	0.9	10M	9
71	- 72	19.5	112.6	+7.6	1.5	1.4	4.0	2
72	- 73	9.0	110.9	-14.5	5.6	2.5	1.8	5.3
73	- 74	11.9	132.6	-0.4				
74	- 75	13.0	137.3	32.7	2.0	1.5	5.5	3.2
75	- 76	6.0	105.1	+3.6	3.3	2.1	2.2	0
76	- 77	2.8	99.8	-14.2	0.7	2.6	0.7	0.8/3.5
77	- 78	4.2	320.9	-49.3	0.6	2.5/1.7	2.8	0
78	- 79	3.7	273.1	-39	0.6	2.0	3.0	1.7
79	- 80	3.2	278.2	-44	6.8	3.3	3.4	2.3
80	- 81	4.4	309.9	-42.6	0.4	0.3	0.8	0.9
81	- 82	4.2	6.3	-8.9	3.9	1.8	1.4	2.3
82	- 83	9.5	318.0	-40.6	0.7/3.0	2.4	2.3	0
83	- 84	7.5	295.7	-57.2	6.6	1.5/4	4	1.6
84	- 85	4.9	299.3	-28.8	2.7/13.8	2.0	1.4	1.0
85	- 86	3.9	327.8	+59.1	5.7	0.9	0.6	1.2
86	- 87	1.3	340.4	-46.7	0.8	1.5	1.5	1.4
87	- 88	2.5	338.1	-57.0	6.5	0.6	2.3	0.7
88	- 89	2.4	261.2	-29.10	2.0	1.5	1.2	0
89	- 90	2.0	313.0	-25.3	0.9	1.0	0.4	0.9
90	- 91	3.2	354.7	-0.2	1.4	0.3	0	1.5
91	- 11	6.4	15.5	+26.4	7.0	0.5	1.5	0.8



72 on small cal boss  
 nr 77 rope in boulder niche  
 78 boulder niche  
 boulder / ended at 81  
 83 top of pitch  
 84 then blue rope  
 87-88 - climb in tube down 3m

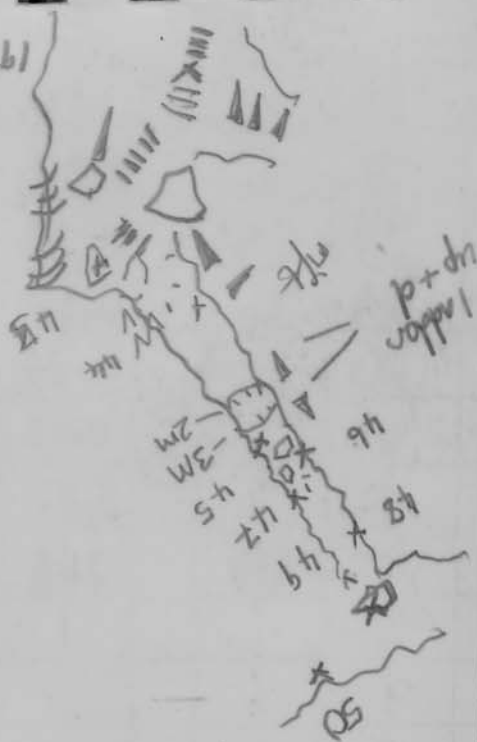


10:30 am  
15:30 pm



small  
ground  
yard

19 on ladders



p+dh  
ladders