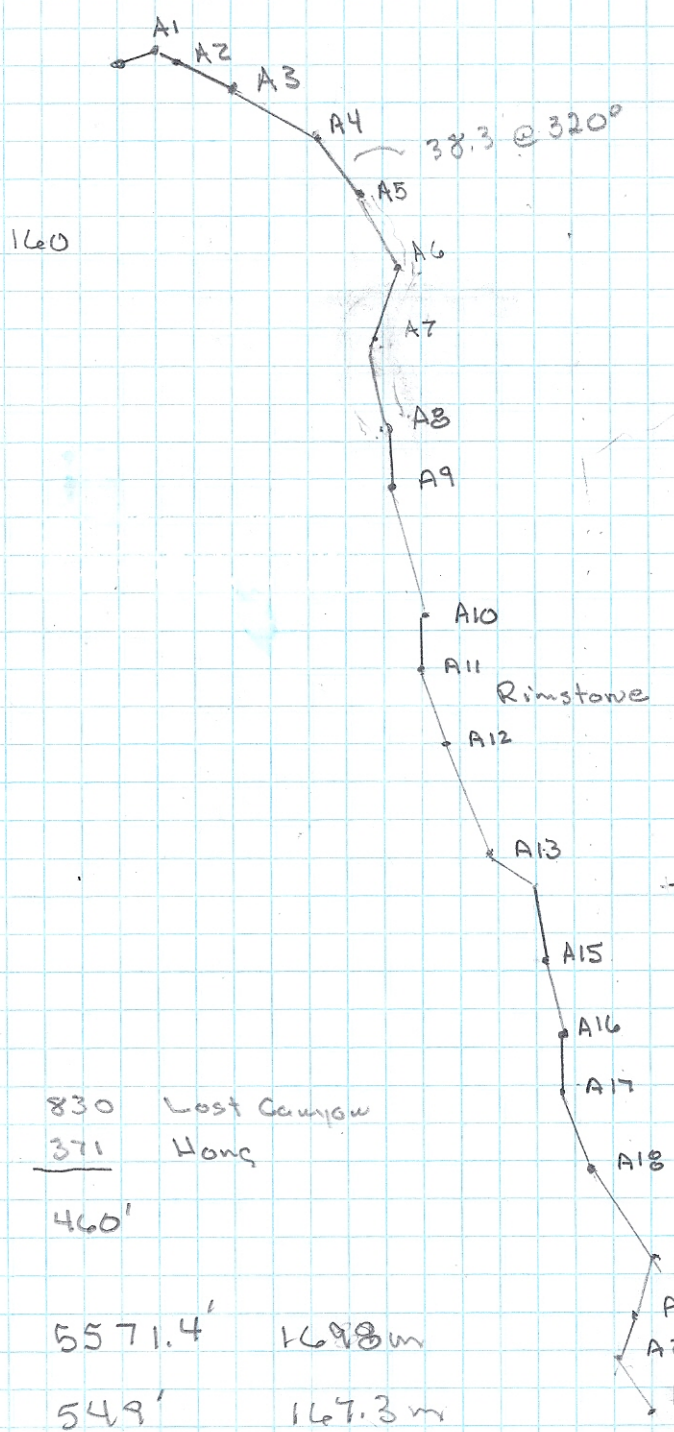


Entrance =

371 #1

Entrance to EOS

876



E to A1	17' @ 72°	
A1 - A2	12.5 @ 112°	2/2/6
A2 - A3	33 @ 115°	15/3/3
A3 - A4	54.5 @ 118°	16/12/3
A4 - A5	38.3 @ 140°	7/11.5/9
A5 - A6	52.1 @ 150°	14/0/11
A6 - A7	41.5 @ 200°	4/16/2
<u>A7 - A8</u>	<u>53.8 @ 170°</u>	<u>14/2/12</u>
A8 - A9	27 @ 176°	8/5/15
A9 - A10	77.1 @ 165°	10/10/10
A10 - A11	33.2 @ 180	12/0/10
A11 - A12	43.6 @ 160	0/10/6
A12 - A13	61.2 @ 158	9/0/21
A13 - A14	28.5 @ 122	10/10/15
A14 - A15	40.5 @ 176	4/13/10
A15 - A16	39.6 @ 164	8/7/12
A16 - A17	32.1 @ 183	8/8/5
A17 - A18	44.6 @ 145	7/0/4/2
A18 - A19	62 @ 146	2/4/10
A19 - A20	32.3 @ 196	0/10/8
A20 - A21	22.2 @ 198	3/4/4/1
<u>A21 - A22</u>	<u>29.4 @ 145</u>	<u>8/0/6</u>
		876

830 Lost Canyon  
371 Hong

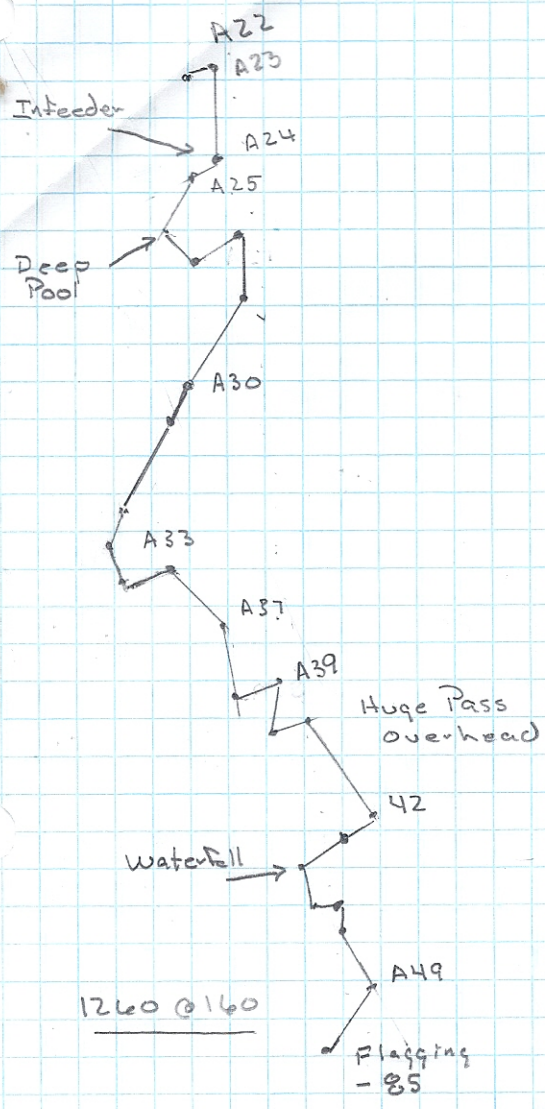
460'

5571.4' 1698m

549' 167.3m

West Canyon / Hong

#2  
790.3



Infeed	A22 - A23	11.5 @ 78°	8/0/6
	A23 - A24	49.4 @ 180	0/12/6 -
	A24 - A25	15.2 @ 242	0/8/10
Deep Pool	A25 - A26	36.7 @ 210	10/0/10 -
	A26 - A27	20.4 @ 134	6/2/10
	A27 - A28	33.5 @ 57	8/2/10
	A28 - A29	38.2 @ 80	0/9/6
	A29 - A30	54.7 @ 212	6/2/20
	A30 - A31	23.2 @ 196	3/4/70
-53	A31 - A32	48 @ 210	6/3/70
	A32 - A33	17.8 @ 202	6/0/70+
	A33 - A34	27.5 @ 158	3/8/70
	A34 - A35	30.4 @ 068°	6/0/73
	A36 - A37	41.5 @ 136°	6/2/77
	A37 - A38	40.6 @ 168	4/6/17
	A38 - A39	23.7 @ 070	20/6/80
Huge Pass Overhead	A39 - A40	34.7 @ 190	3/10/7
	A40 - A41	25.4 @ 73	6/0/75
	A41 - A42	58 @ 145	6/13/10
	A42 - A43	10.6 @ 238	2/4/20
Waterfall	A43 - A44	23.4 @ 235	6/2/34
	A44 - A45	22.1 @ 170	8/3/47
	A45 - A46	15.6 @ 086	6/0/8
	A47 - A48	14.3 @ 178	0/4/17
	A48 - A49	36.2 @ 150	14/0/21
Flag @ -85	A49 - A50	39.7 @ 215	0/13/60
			790.3

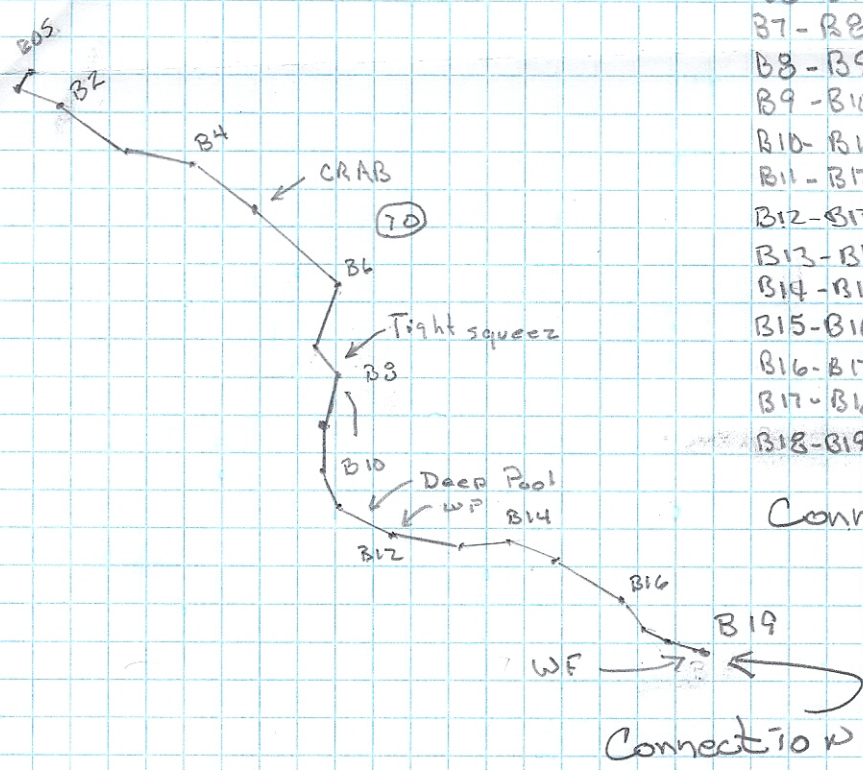
3-5-14 Lost Canyon/Hong

583.4

From last survey to Connect

Flag - EOS -

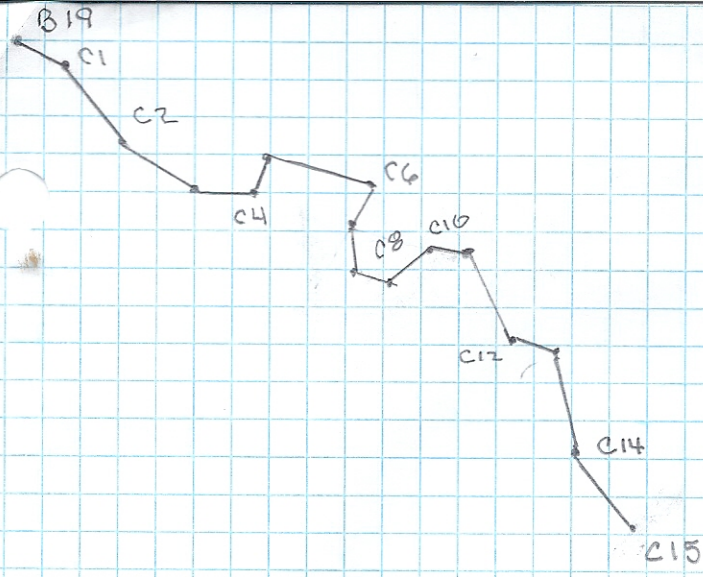
EOS - B1 7.1 @ 205			
B1-B2	24.7 @ 110°	10/0/10	
B2-B3	44.7 @ 125°	10/4/10	
B3-B4	38 @ 100	10/0/60	-
B4-B5	41.3 @ 125	4/4/60	CRAB
B5-B6	50.7 @ 130	0/6/70	-
B6-B7	36 @ 200	4/6/70+	
B7-B8	19 @ 140	Tight squeez	
B8-B9	27.3 @ 170	2/4/8	
B9-B10	25.4 @ 180	2/0/?	
B10-B11	24.3 @ 155	6/0/2	
B11-B12	35.4 @ 115	4/4/12	Pool WF
B12-B13	38.8 @ 100	1/1/17	
B13-B14	31.9 @ 85	8/6/12	
B14-B15	27 @ 110	1/3/15	+183
B15-B16	41.4 @ 120	4/0/20	
B16-B17	26 @ 135	8/6/20	Flood
B17-B18	17 @ 115	2/2/12	water (Graw)
B18-B19	29.2 @ 105	water fall	



Connection

583.4

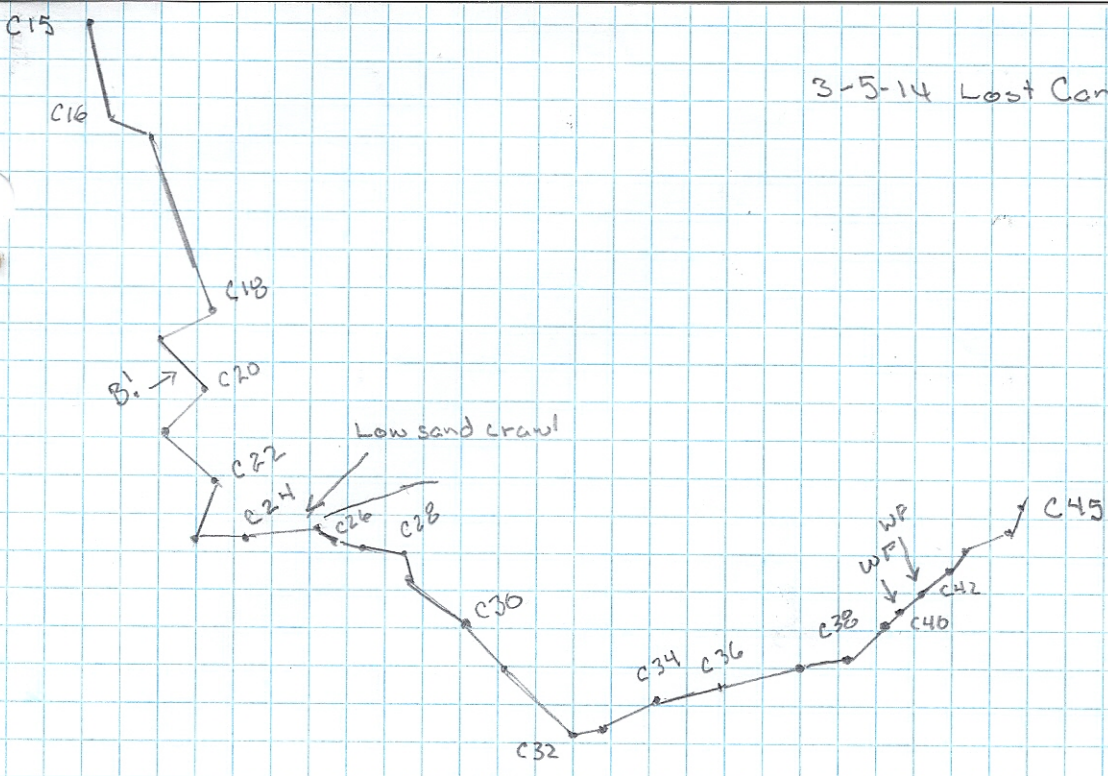
Connection



3-5-14 Lost Canyon/Horn #4  
556.2

B19 - C1	30.7 @ 115	4/0/15
C1 - C2	50 @ 140	6/8/12
C2 - C3	42.8 @ 120	10/0/6
C3 - C4	36 @ 090	10/0/4/3
C4 - C5	19.7 @ 020	12/0/3
C5 - C6	58.1 @ 105	0/12/4
C6 - C7	30.8 @ 210	3/12/6
C7 - C8	25.3 @ 170	10/10/7 Bts
C8 - C9	20 @ 105	6/10/6
C9 - C10	33.8 @ 050	12/12/6
C10 - C11	24 @ 100	12/11/6
C11 - C12	47.4 @ 155	10/10/6
C12 - C13	27.8 @ 110	4/12/10
C13 - C14	57.3 @ 165	7/12/12
C14 - C15	93 @ 140	0/12/10 B!
<hr/>		
556.7		

916.7

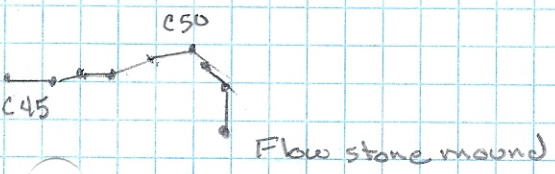


C-15-C16	49 @ 165	10/4/14
C16-C17	22.4 @ 110	10/6/10
C17-C18	88.8 @ 160	10/16/15
C18-C19	33 @ 245	0/25/16
C19-C20	39 @ 130	10/0/12 B1
C20-C21	35 @ 225	0/12/10
C21-C22	38.4 @ 130	12/0/10
C22-C23	37.7 @ 200	10/8/12
C23-C24	29 @ 090	12/0/4
C-24-C25	42.7 @ 085	2/10/4 Low crawl 10" x 40'
C25-C26	6.4 @ 110	10/1/2
C26-C27	19.3 @ 105	10/1/2
C27-C28	24.5 @ 100	2/4/15

C28-C29	16 @ 165	9/8/10
C29-C30	40 @ 125	7/0/20
C30-C31	35 @ 135	4/4/30
C31-C32	53.1 @ 130	4/10/57
C32-C33	17 @ 080	12/6/71
C33-C34	35 @ 065	4/4/72
C34-C35	38.6 @ 075	4/0/16
C35-C37	89 @ 075	2/2/15
C37-C38	31.8 @ 080	2/2/43
C38-C39	26.6 @ 045	5/0/63
C39-C40	13 @ 055	6/6/60 WF
C40-C41	25.6 @ 045	2/2/6 WF

C41-C42	21 @ 050	14/6/22
C42-C43	16 @ 035	0/10/22
C43-C44	24.5 @ 070	6/10/10
C44-C45	18.9 @ 020	9/0/33

931.3

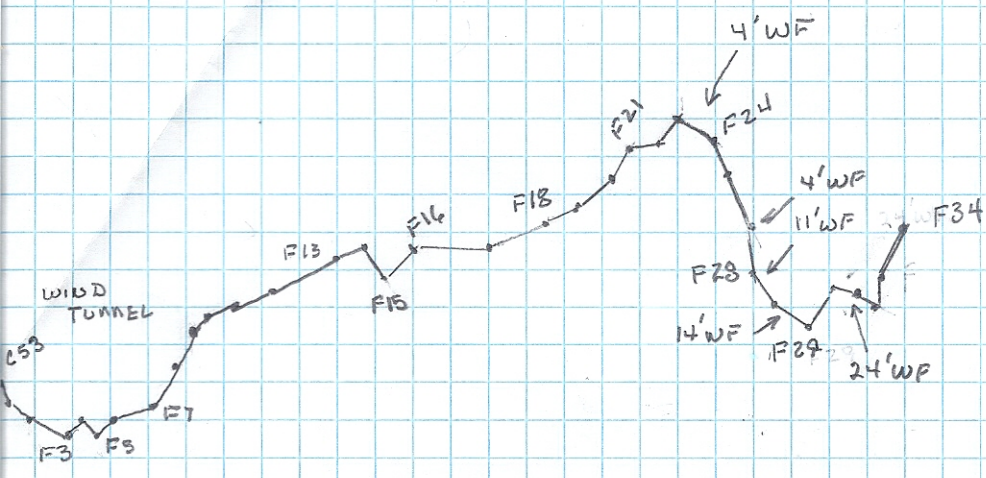


C45-C46	25.1 @ 090	
C46-C47	14.6 @ 075	0/6/18
C47-C48	15.4 @ 090	6/12/19 WF
C48-C49	22.4 @ 070	4/6/6/1
C49-C50	22 @ 080	4/2/8/2
C50-C51	11.2 @ 125	2/3/4/1
C51-C52	19.3 @ 130	1/4/5/1
C52-C53	23.6 @ 180	

EOS Lg Flowstone mound  
 passage continues underneath  
 flagging

153.6

2224	B + C survey	- 160
<u>1660</u>	A survey	- 85
3884		- 245



4/6/14 Lost Canyon/Hong Cave

F23-F24	22.2 @ 113°	2/4/13/1	4' WF
F24-F25	18.9 @ 156°	3/3/17/1	
F25-F26	39.5 @ 154°	4/2/18/1	
F26-F27	33.2 @ 172°		4' WF
F27-F28	19.5 @ 145°	1/5/8/5	11' WF
F28-F29	23.1 @ 122°	12/0/20/1	14' WF
F29-F30	23.7 @ 034	0/8/8	
F30-F31	13.3 @ 104		24' WF
F31-F32	15 @ 117	5/12/10	
F32-F33	17 @ 360	5/4/22	
F33-F34	33 @ 026	6/2/5	
248.4			

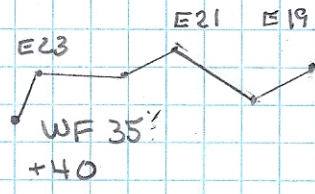
C53-F1	7.5 @ 153	2/2/2	Under Flowstone
F1-F2	13.9 @ 139	1/1/2	
F2-F3	14.0 @ 118	3/0/5/1	
F3-F4	11.3 @ 048	0/5/6/2	
F4-F5	11.0 @ 131	4/0/6/2	Nice Flowstone Limestone
F5-F6	9.9 @ 052	1/1/13/1.5	
F6-F7	21.7 @ 077	2/2/6/1	
F7-F8	19.3 @ 028	0/3/7/2	
F8-F9	13.6 @ 020	0/3/7/2	
F9-F10	11.9 @ 043	0/2/4/2	
F10-F11	27.2 @ 070	1/3/4/5	
F11-F12	19.3 @ 068	2/1/6/5	
F12-F13	42.1 @ 062	0/5/1.5	
F13-F14	17.4 @ 068	0/5/7/2	
F14-F15	24.7 @ 146	6/0/7/2	2' WF
F15-F16	24.8 @ 043	0/7/7	
F16-F17	37.9 @ 092	4/3/8/5	
F17-F18	35.0 @ 068	2/2/6/5	
F18-F19	23.1 @ 065	6/1/7	
F19-F20	21.7 @ 045		13' WF
F20-F21	21.8 @ 026	0/6/6/2	
F21-F22	16.0 @ 082	0/8/14	
F22-F23	19.7 @ 038		14' WF
459.8			

194.9

HONG COVER

# 8

	E19 E20	38.4	@ 242	3/13/6
	E20 E21	56	@ 306	0/13/4
	E21 E22	31	@ 243	10/4/5
	E22 E23	44.5	@ 273	6/7/5
F34-F35	E23 E24	<u>25</u>	@ 202	4/4/10
	WF	194.9		
			800 @ 286°	





Hong Cave 3-23-14 792.6

Com. entrance to WF climb

#9

Sump to A

Sump D1	8.5 @ 238	Str	Stretch on L
D1 D2	17.6 @ 181	0/6/4	
D2 D3	9.4 @ 118°	0/4/3	
D3 D4	15.0 @ 194	0/10/13	
D4 A	21.8 @ 268		
A	<u>72.3</u>		

Entrance to Waterfall

E to A	16.2 @ 283	4/4/3	
A to E1	15.8 @ 194	8/H/10	
E1 E2	41.5 @ 280	0/18/9	
E2 E3	43.6 @ 238	6/3/8	
E3 E4	29.3 @ 168	18/0/10	
E4 E5	19.6 @ 268	0/9/6	
E5 E6	41.4 @ 274	4/0/4	
E6 E7	13.9 @ 330	25/7/8	
E7 E8	24.9 @ 354	8/8/47	12' WF
E8 E9	33.2 @ 296	9/0/45	4' WF
E9 E10	18.3 @ 298	4/4/12	
E10 E11	41.1 @ 305	7/0/12	
E11 E12	52.3 @ 331	5/2/13	
E12 E13	41.7 @ 326	4/7/3	
E13 E14	62.6 @ 303	10/4/6	
E14 E15	56.4 @ 296	6/14/10	
E15-E16	33 @ 328	7/0/12	
E16-E17	52 @ 306	1/14/4	
E17-E18	56.2 @ 326	10/3/4	
E18-E19	<u>27.3 @ 288</u>	4/9/3	
	720.3		

