

19/3/2013

Tham Pha Phueng

GPS waypoint on boulder on left at end of
old wooden walkway + 5m before concrete steps

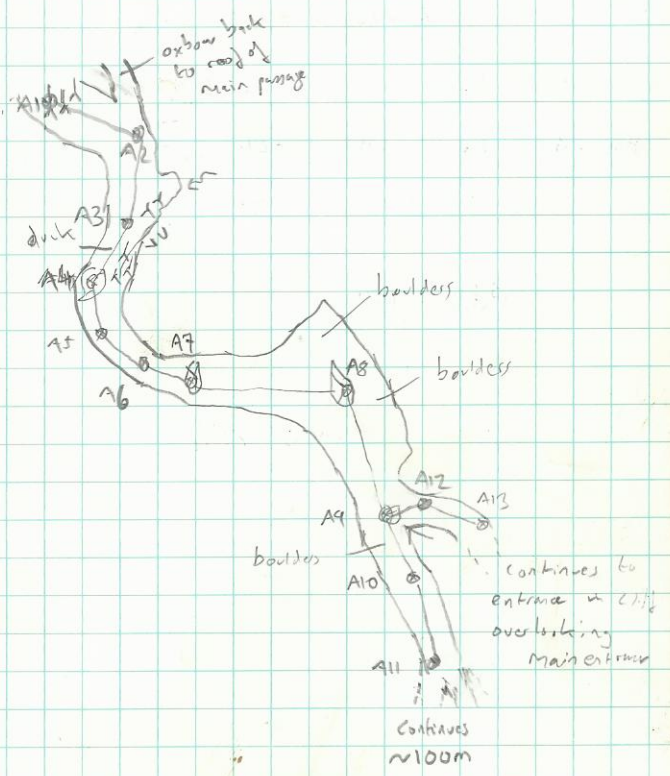
47Q 77062 2150051 alt. 1387m

+1-12 x 290 wpt 146

NA00430



10



③ Tham Pha Phung 19/3/13
Chartwell

	D	A	V		L	2	V	D
A1-A2	12/47	122/5	+08/1	A1	6	1	3	1
A2-A3	11/28	188/9	-06/6	A2	1	2	4	1/5
A3-A4	9/45	204/4	+12/5	A3	2	3	3	1/4
A4-A5	6/22	177/8	-05/0	A4	2	2	2	1
A5-A6	5/89	125/0	-00/4	A5	2	2	2	1/4
A6-A7	6/20	102/1	+18/2	A6	2	1	1	1/5
A7-A8	2/07	092/2	+09/6	A7	3	4	2	2
A8-A9	18/53	151/8	+06/0	A8	5/4	4/2	5	2
A9-A10				A9	5	3	3	1
A10-A11	8/45	150/5	+01/4	A10	1/5	2	2	0/5
A11-A12				A11	1/5	1/5	3	0/3
A9-A12	5/77	065/3	+03/1	A12	3	2	3	0
A12-A13	9/18	127/2	+02/6	A13	0	3	3	1/5

123.05

② Tham Pha Phung 19/3/13

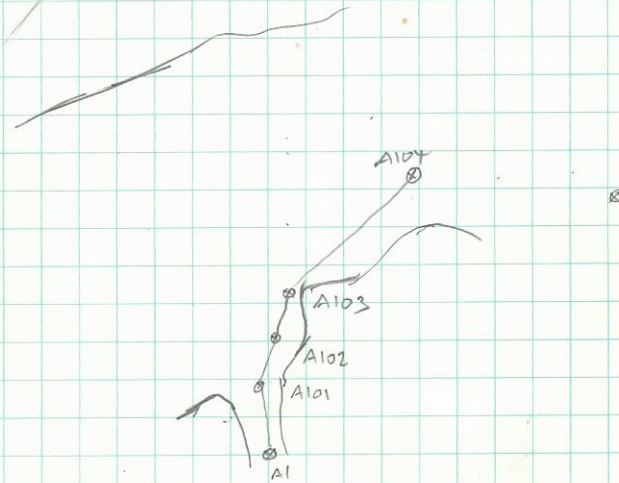
⑤ Tham Pha Pheng

19/2/13

	D	A	V		L	A	V	D
A1 - A101	9/65	357/4	-26/5	(A101)	5	4	17	0
A101 - A102	6/74	029/9	-00/4	(A102)	50	3	19	1
A102 - A103	6/28	010/1	-28/8	(A103)	50	1	20	0
A103 - A104	25/12	064/3	+02/2	(A104)	34	6	18	0
A104 - A105	26/18	094/4	+27/8	(A105)	4	25	12	0
A105 - A106	33/07	124/3	+32/5					

A106 = G's point

(107.07)



A101 G for wall
348/1 52/1 -07/9

Chartwell

④ Tham Pha Pheng

19/3/13

	D	A	V		L	R	u	D
B113-B114	7/32	164/7	-8/7	(B113)	1	0	1	0/5
B114-B115	4/37	193/2	-13/1	B114	0/5	1	2/5	1
B115-B116	6/54	172/0	-6/6	B115	0/5	0	2	5
B116-B117	2/36	153/9	-7/5	B116	1	0	4/5	0/5 ^{across pit}
B117-B118	7/42	166/2	-7/2	B117	0	1	5	1/5 ^{climb 3m}
B118-B119	8/59	168/1	0/3	B118	0	0/5	3	1
B119-B120	5/76	162/6	2/4	B119	1	1	4/5	0/5
B120-B121	19/36	157.6	42/0	B120	2	3	5	1
				B120	3/5	2	7/5	0/5
B120-B121	2/18	258/4	16/5	B120	4	5	7/5	0/5
B121-B122	3/71	267/9	-77/0	B121	0	5	10	0/5 ^{hole up}
B122-B123	4/43	241/7	-20/6	B122	0/5	1	1	0
B123-B124	4/00	223/7	17/5	B123	1/5	1	11	0
B124-B125	10/56	335/1	-6/5	B124	0	2	9	2
B125-B126	8/88	329/0	-0/4	B125	0/5	0	10	0/5
B126-B127	5/61	341/0	34/7	B126	0	4	12/5	0/5
B127-A12	8/51	306/2	0/6	B127	2	2	7	1/5

A12 = survey 7/9/3/13

① THAM PHA PHUEN

20/3/13

	D	A	V		L	R	u	D
B1-B2	26/37	005/9	-19/0	outside	0/3	0	0/1	0/5
B1-B2	1/53	186/5	03/2	(B1)	0	0/3	0/1	0/5
B2-B3	6/48	197/1	-20/2	(B2)	0	0/3	2/9	0/5
B3-B4	6/28	283/7	-18/7	(B3)	1	1/5	4	1
B4-B5	6/29	247/5	-26/4	(B4)	0	0/5	3	1
B5-B6	7/32	270/8	-15/7	(B5)	0/5	4/5	3	0/5
B6-?	16/62	253/3	-26/8	(B6)	1	0/5	1	1 (?)
B4-B101	1/63	149/8	12/9					
B102-B102	4	172/8	-21/8	(B102)	0/5	0	0	2
B102-B103	4/41	156/3	-07/1	(B102)	1	0	4	1
B103-B104	3/48	136/7	03/6	(B103)	1	0	0	1/5
B104-B105	8/14	165/7	4/5	(B104)	0/5	0	1	1
B105-B106	5/88	140/0	3/7	B105	0/5	0	4	1/5
B106-B107	5/78	168/1	0/7	B106	0/5	0	1	1/5
B107-B108	4/16	145/3	4/5	B107	1	0	1	1 (?)
B108-B109	8/17	72/4	5/1	B108	1	0	0/5	1
B109-B110	2/55	076/5	-13/4	B109	4	2	3	1
B110-C1	5/21	101/1	-1/6	B110	1	0/5	3	1
C1-C2	6/43	115/7	1/0	C1	3/5	0/5	8	1
C2-C3	10/49	62/6	25/4	C2	1	0	9	1
C3-C4	5/83	22/9	46/2	C3	0	0/5	8	1/5
C4-C5	4/88	73/1	34/3	C4	0	0/5	0/5	1
C5-C6	9/77	61/0	33/0	C5	1	2	4	1
				(C6)	5/5	3/5	4/5	1/5
B110-B111	4/53	27/9	-27/8	(B110)	0/5	0/5	3	1
B111-B112	6/03	311/0	-12/8	B111	1	0	0/5	1
B112-B113	2/83	243/9	-03/7	B112	1	0	1	1

Notes - Glen
Inst: Tomak

THAM PHA PHUEN

20/3/2013

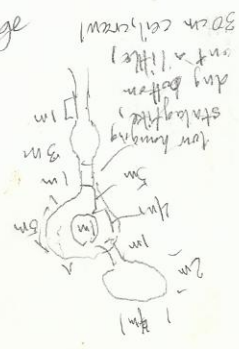
②

30cm between speleotherms

	D	A	V		L	R	U	D
B6-B7	2/86	249/5	-7/2	B6	1/3	0	2	1
B7-B8	5/50	263/2	-62/7					
B7				B7	1/60	1	2/10	5/11
B8-B9	2/40	288/5	-0/9	B8	2/4	2/5	7/8	1
B9-B10	7/50	229/9	-7/6	B9	3/9	0/8	1/5	1/3
B10-B11	4/64	266/7	-16/3	B10	0	1/2	1/1	1/3
B11-B12	2/81	311/7	-22/7	B11	1	1/4	0/6	1
B12-B13	3/81	233/1	-29/5	B12	1/2	6/5	1/7	2/5
B13-B101	1/52	161/7	6/2					
B101-B102	6/29	159/9	-14/5	B101	1	0	1/5	1/9
B102-B103	4/53	143/1	4/0	B102	0	1/2	1/5	1
B103-B104	8/14	166/2	4/7	B103	0/7	0	1/5	1
B104-B105	6/70	140/9	-1/7	B104	0/8	0	0/3	1/5
B105-B106	1/71	205/6	16/1	B105	0	0/6	0/9	1
B106-B107	2/69	143/0	5/2	B106	0/9	0	0/5	1/5
B107-B108	5/06	158/3	1/2	B107	3/6	0/8	1/8	1/6
B108-B109	8/22	73/7	5/6	B108	1	0	0/7	1
B109-B110	2/49	74/3	-13/9	B109	3	2	2/7	0/5
B107-D1	5/16	73/4	12/4					
D1-D2	3/62	209/5	17/5	D1	0	0/4	0/5	0/2
D2-B109	3/69	138/9	-15/9	D2	1	0/5	1	0/7
B120-E1	6/65	137/1	2/9					
E1-E2	2/83	184/2	-65/6 (E1)	0	0/8	1/3	2/8	
E2-E3	1/94	199/4	7/8	0	0/8	1/25	0/5	
①	21/213							

	D	A	V	L	R	U	D
E17-E18	6/47	24/7	10/8	E17	0/7	0	1/7
E18-E19	5/57	123/1	16/5	E18	0	0/5	1/2
E19-E20	3/00	24/6	25/0	E19	1/5	0/2	0/5
E20					0	0/5	0/4

Black Stal Passage



21/3/2013
Tham Pha Phung
Glenn
NA00430

NA00430

21/3/2013 THAM PHA PHUNG
Glenn Entrance Series
Chartwell

	D	A	V	L	R	U	D
E3-E4	3/22	209/6	10/4	E3	0/3	0	0/2
E4-E5	3/44	165/8	25/6	E4	2	0	3/5
E5-E6	3/16	161/7	37/6	E5	0/8	0/4	1/2
E6-E7	2/90	293/6	14/3	E6	0	1	0/5
E7-E8	6/62	191/4	6/4	E7	1/7	0	1/5
E8-E9	3/175	215/0	2/0	E8	0	0/5	0/4
E9-E10	2/42	71/1	11/0	E9	0/6	0/3	1
E10-E11	10/31	12/6	7/8	E10	0/6	0/3	1
E11-E12	10/01	11/4	6/4	E11	0	0/5	0/7
E12-E13	3/21	344/5	17/6	E12	0/5	0/5	4/8
E13-E14	2/44	53/2	13/0	E13	0	1	1/4
E14-E15	2/97	336/8	11/3	E14	0/8	0	0/5
E15-E16	5/43	139/4	6/2	E15	0/8	2	0
E16-E17	3/72	40/6	9/1	E16	0/7	0	1