

12/04/11

THAM YAI NAM NAO

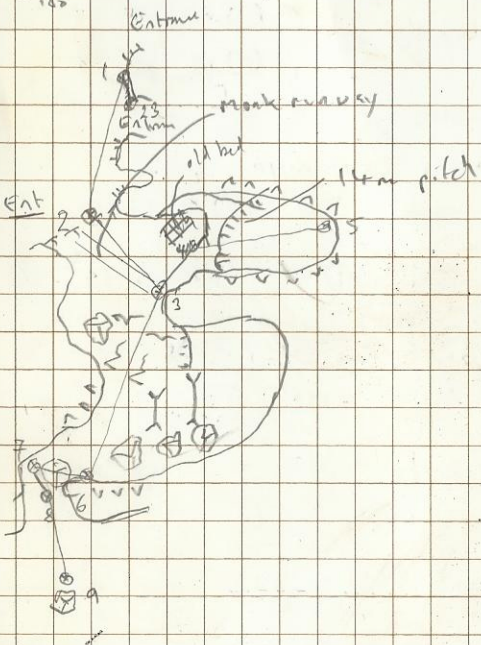
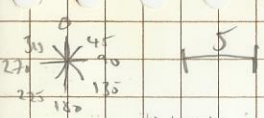
SURVEY FROM SECOND ENTRANCE ..
TO BAT ENTRANCE

Book: MARTIN ELLIS

Inst: PHIL COLLETT (SMCC DISTOX)

WALLS PEOO5U

①

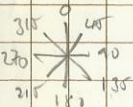


F	To	D	A	C	L	A	U
Surface PE000ST:23	1	1/90	322/1	+45/1	①	-	0 - -
	1	2	10/27	202/7	+28/5	②	3 5 6 0
					③	8/3	6 5 1/3
					④	5	2 9 14
					⑤	2 2	9 14
					⑥	0	3 4 1/1
					⑦	0/6	0 5 1
					⑧	8	6 2 5
					⑨	3 2 1	8 1
					⑩		

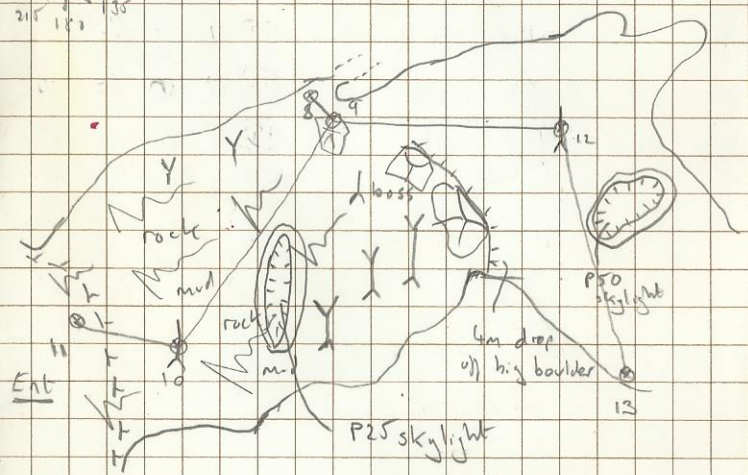
③ 12/4/11 Tham Vai Nam Nao

Caving Supplies Ltd., Buxton, England.

② 12/4/11 Tham Vai Nam Nao



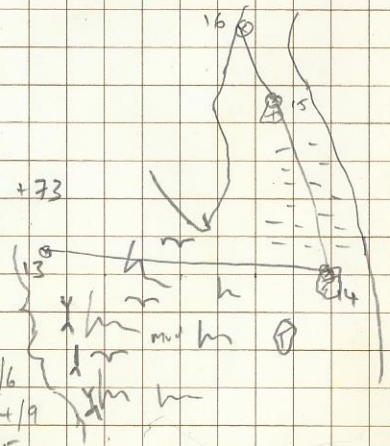
12/4/11 Tham Yai Nam Nao (5)



12-12a 47/3 129/0 +73
12a = skylight P50

Splays

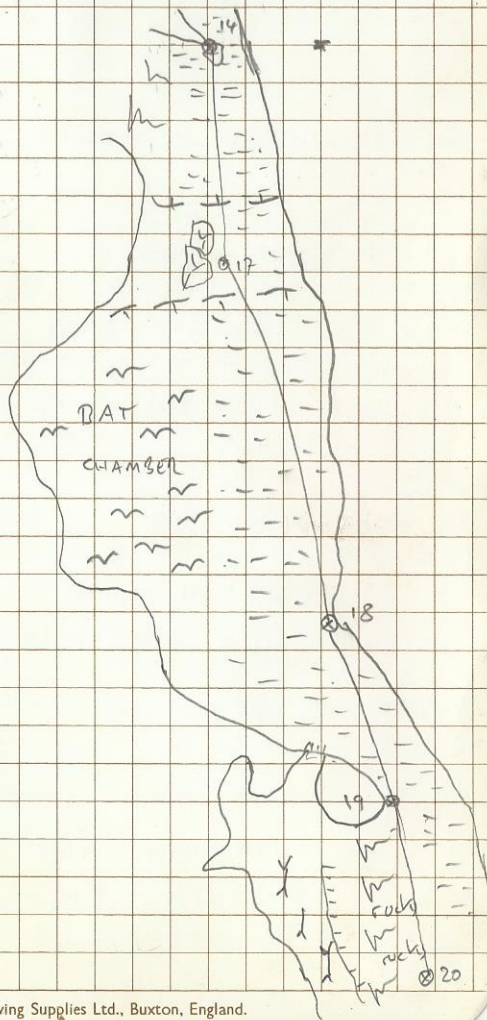
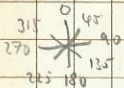
11-11a	5/8	019/4	-01
-11b	51/7	052/9	-18/6
-11c	37/7	110/3	-24/9
-11d	22/7	150/1	05
-11e	14/3	182/4	22/3



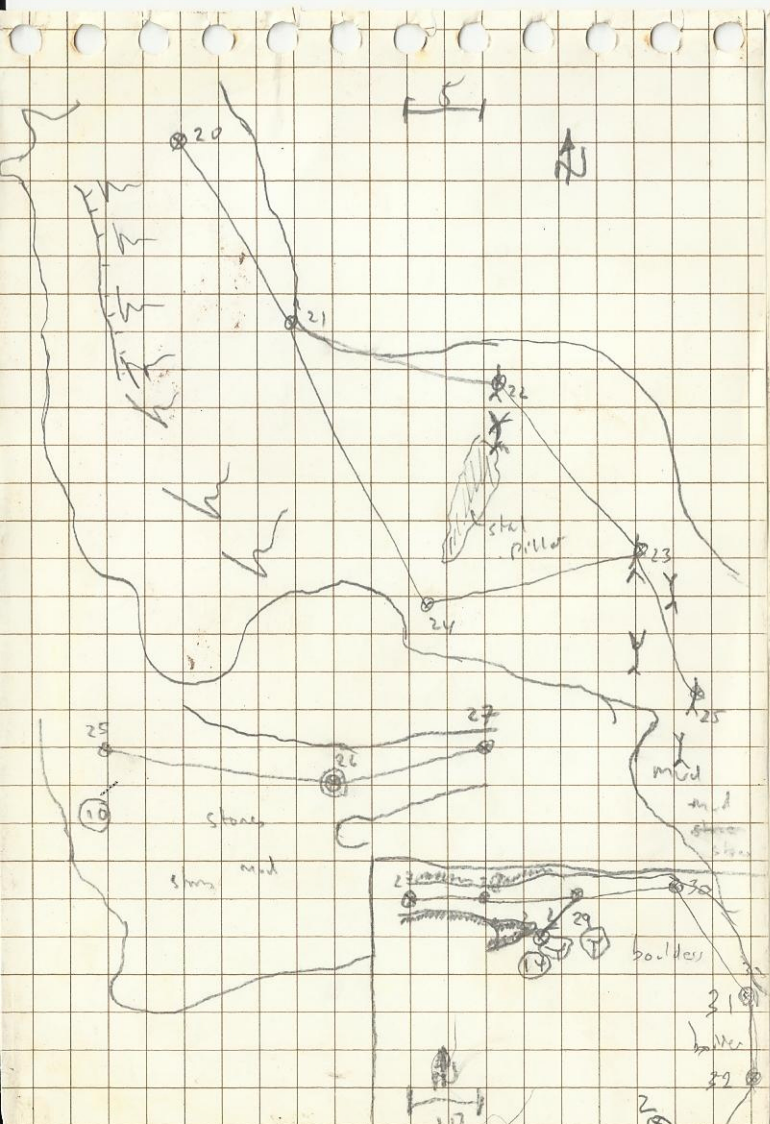
		D	A	C	L	R	U	D
9	10	15/20 17/80	232/7	+26/3	⑩	6/8	4	10/7 1/5
10	11	8/97	300/5	+26/9	⑪	17	5 10	0
(26)								
9	12	15/24	093/1	-28/0	⑫	7	17	14 1/8
12	13	19/06	168/1	-28/6	⑬	10	3	10 1/3
13	14	23/56	093/3	-27/1	⑭	5	3	7 0/3
14	15	13/43	317/9	-5/2	⑮	3	3	7 0/3
15	16	8/00	317/9	-7/2				

16 = PE0005T: 30

⑭ 12/4/11 Tham Yai Nam Nao



	D	A	C	L	R	UD
14	17	14/27	17/2	+2/0	(17)	7 8 12 1
17	18	26/87	14/8	+0/4	(18)	0 10 10 1/4
18	19	16/29	14/6	-1/6	(19)	4 0 4 1/2
19	20	13/10	16/8	-1/3	(20)	7 15 13 0
					(21)	



	D	A	C	L	R	U	D
20	21	17/95	133/0 133/0	+0/6	20	0	27 3 1/2
21	22	14/20	106/8	+0/7	22	3	7 2 1
22	23	12/46	148/4	+10/5	23	9	16 3 1/1
23	24	15/77	260/5	+5/5	24	3	5 10 1/2
24	21	19/81	344/6	-11/6	25	6	0 8 1/4
23	25	11/88	151/3	-0/7	26	2	17 3 1/2
25	26	15/07	098/4	-12/8	27	2	2 0 1/3
26	27	8/96	058/8	-8/3	28	3	3 1/5 0/6
27	28	22/25	10/96	090/6	+6/6	29	5 10 5 0
28	29	11/24	085/5	+21/8	30	4	15 0 2
29	PE0005:14	7/05	232/6	+38/4	31	0	10 1 1
29	30	12/86	083/9	-04/2	32	1	2 2 1
30	31	19/49	127/4	-4/1	33		
31	32	9/17	167/6	+10/0	PE0005:2	33	17/21 094/9 -32/3
32	33	18/90	156/8	-1/3			