

25/11/2010

Thank You Nam Dao Resurgence

Tony Bolger - list. (30m tape + Suunto combi)

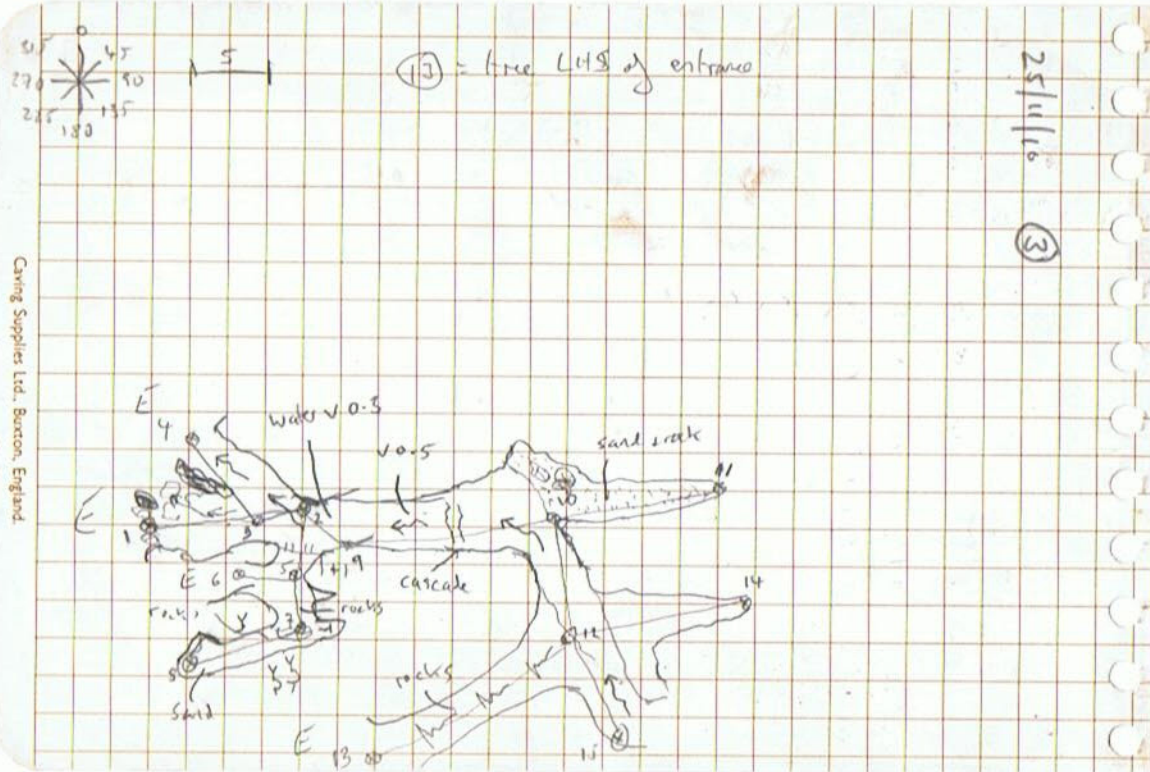
Martin Ellis - hooks

Glenn - tape

Meow, TJ

Sta ① = sta ② of 24/11/10 surface
survey

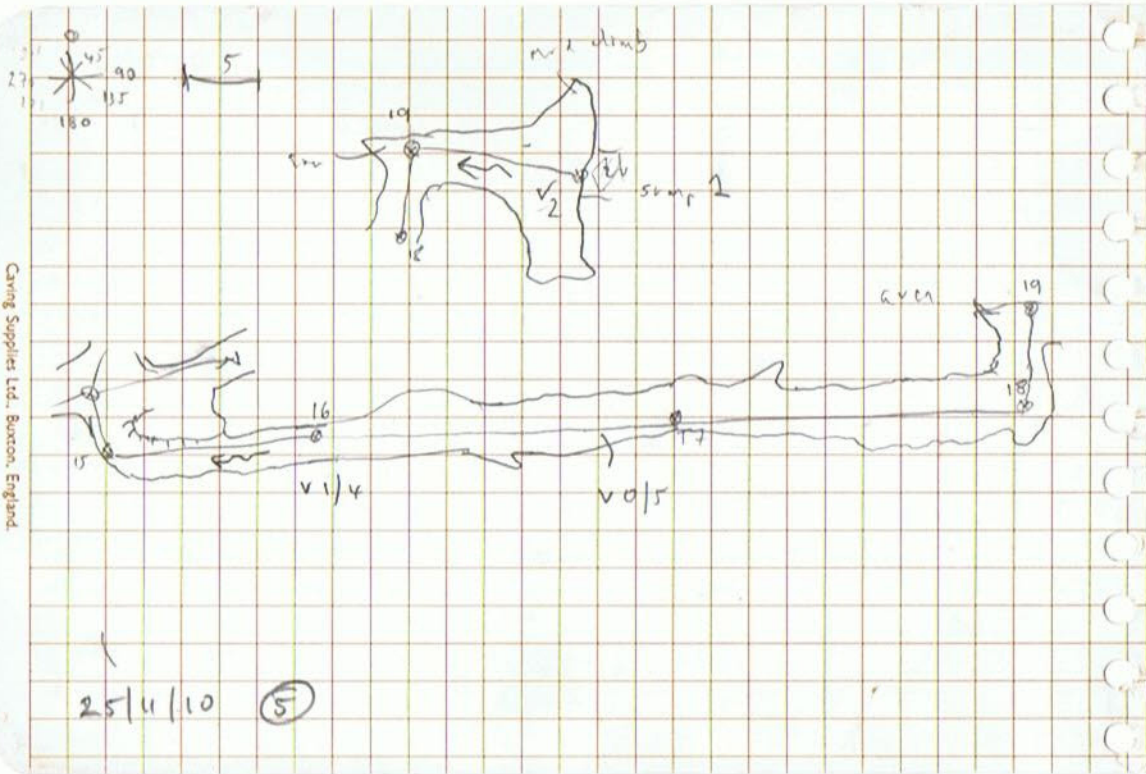
①



25/11/16 (3)

1-2	10/84	081	-00/5	(1)	1	1	0	1/5
3-2	4/67	086/5	+10	(2)	0	3	1/5	1/2
3-4	7/66	300	-03	(3)	3	1/5	2	1/0
2-5	5/45	189/5	+21	(4)	2	2	0/0	0/8
5-6	4/00	284	+22	(5)	0	2	0	0/6
6-7	2/80	181	+17	(6)	3	2	1	0
7-8	7/42	255	-09	(7)	1/5	1/5	3	1/5
2-9	3/00	133	-03	(8)	0/6	0/6	1/5	1/5
9-10	14/07	069/5	+02	(9)	2/5	0	4	1/6
10-11	11/65	061	+17	(10)	0	3	2	1/3
10-12	8/36	175	+03	(11)	0/5	0/5	1	1
12-13	15/00	235	+44	(12)	5	3	8	0
12-14	12/00	065	+05	(13)	1	4	0	1/3
12-15	6/98	148	+02	(14)	0/5	0/5	1	1
				(15)	5	0	2	1/6
				(16)				
				(17)				

25/11/16 (2)



Caring Supplies Ltd., Buxton, England.

15-16	13/75	061	-02	(16)	0	3	0/5	3 0/6
16-17	23/00	073	00	(17)	3	0	0/5	3 0/5
17-18	23/90	077/5	±0.2	(18)	4	2	0/5	3 0/5
18-19	7/66	005	00	(19)	0	5	4	0/2
19-20	10/16	103	0.0	(20)	5	8	1	0/2
				(21)				
				(22)				

78
113
191

25/11/10 (4)

25/11/10

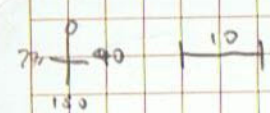
Thim Ya: Nam Nao

Resurvey

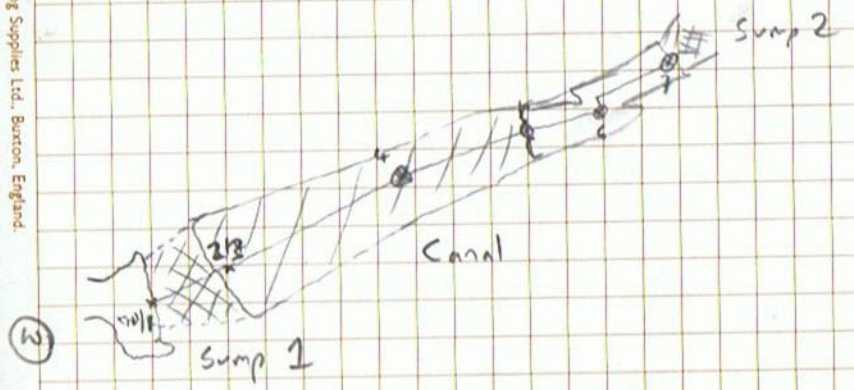
Upstream survey from Sump 1 - Sump 2

Alex Fletcher

①



Caving Supplies Ltd., Burton, England.



End sta - 1	5m	-90	000
1-2	10m	050	
2-3	5m	+90	000
3-4	25m	050	00 Canal
4-5	15m	060	+01 to your dam
5-6	10m	050	in water arch on left
6-7	10m	060	to Sump 2

(2)

Caving Supplies Ltd., Buxton, England.