

Chaiyaphum: Ban Tham Ngoen area

Tham Tec, Tham Sing To, Tham
Kum, Tham Nimit, Tham So, Tham
Sai Chai Patgui Tip 1 & 2

00

)

EY

K #1

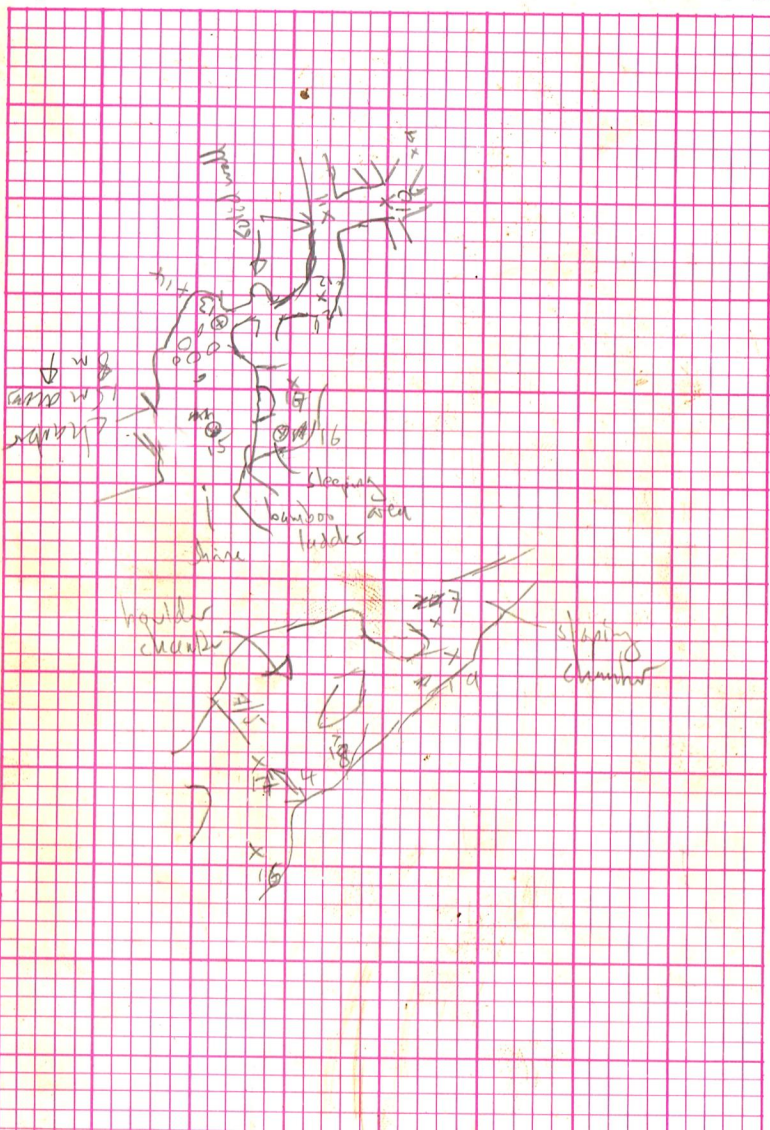
1. Start at centre of book. Remove pages when convenient.
2. Define north and scale on grid. Use metres.
3. Make scale sketch survey at survey station.
4. Estimate distances from station to left and right walls, up to roof and down to floor (L, R, U, D).
5. Assistant takes tape and marks forward station with cairn.
6. Record distance between stations.
7. Align compass horizontally against tape and measure bearing from above.
8. Agree estimate of vertical range with assistant, or measure vertical angle with clinometer.
9. Move to forward station and repeat.

Name: (Tham Tec) CAVE 1 CAVE 2-Tham Sing To
Tham Kum, Tham Nimit, Tham

Area: BAN THAM NGOEN
Tham Sai Chai Patgui Tip 1+2
Tham So

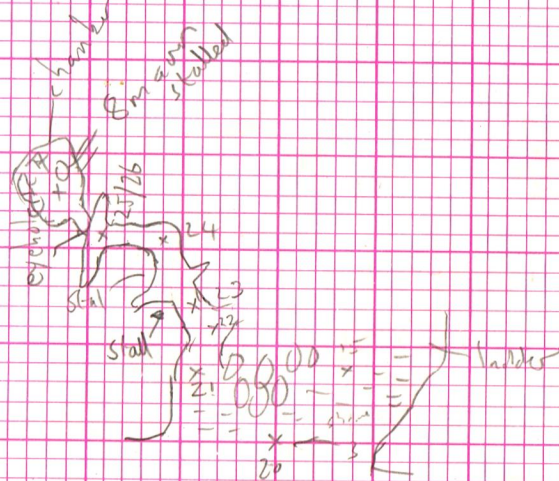
[illegible]

C1-2



STATION	L	R	U	D	CAVE? CAVE 1 - <u>Tham</u> <u>Ice</u>			
					DISTANCE 111.2	MAGNETIC BEARING	VERT. ANGLE	VERT. RANGE
15 ↓				1/6	6/9	322	+9	
20 ↑	5	3	3	1/6	11/5	239	+14	
21 ↓	2	2	2	1/5	2/6	091	+2	
22 ↓	0/5	3	2	1/6	5/2	218	+2/5	
23 ↓	1		1	1/0	8/9	017	-16	
24 ↑	1	1	2	1/0	3/9	128	-8	
25 ↓	0/2	0/2	2	1/0 0/8	1/2	—	+90	
26 ↑	2/5	2/5	4	1/6	3/3	185	+2	
27	2/5	2/5	4	1/6				
SURVEY TO CAVE								
20 ↑				1/6	8/3	126	+11	
28 A ↓				1/5	19/8	302	-13 2	
22 B ↓				1/8	8/6	103	+4	
30 C ↓				1/5				
GPS = CAVE 1								

C1-3

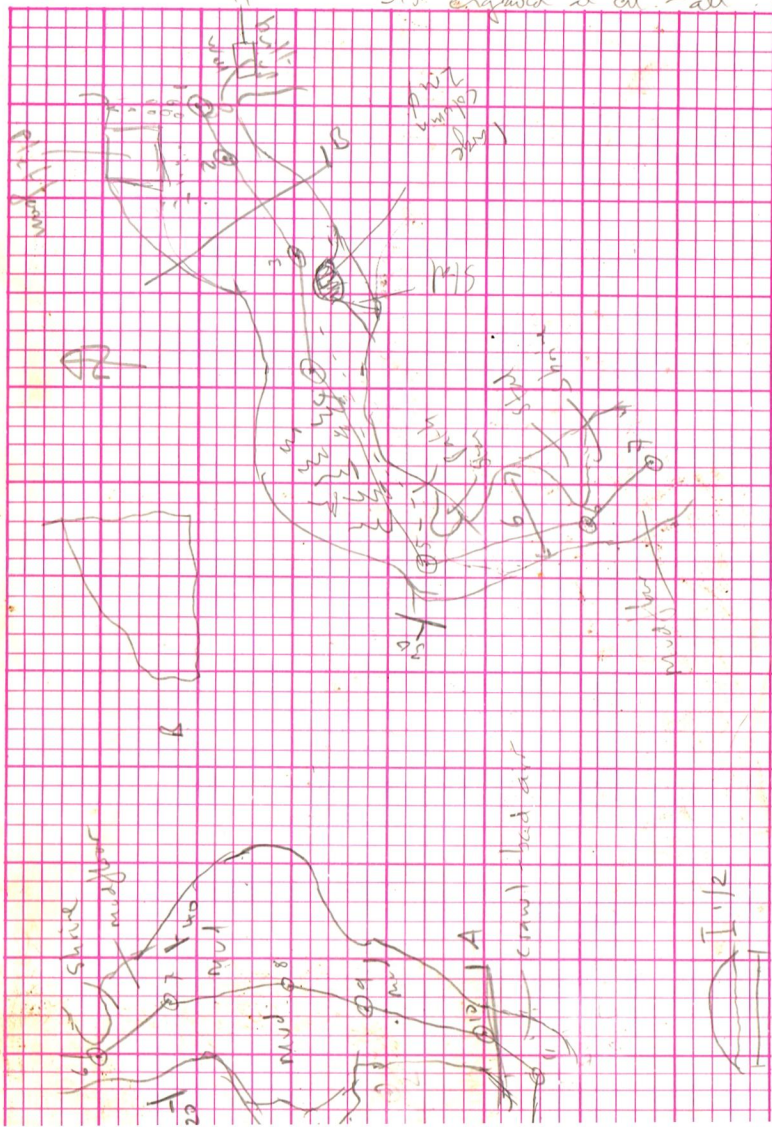


$$ME = 1.75$$
$$HJ = 1.75$$

STATION	L	R	U	D	CAVE? CAVE 2 - ^{Tham} Sing To			
					DISTANCE	MAGNETIC BEARING	VERT. ANGLE	VERT. RANGE
1 \uparrow				0				
2 \uparrow	3	8	8	1/75	6/3	050	+32	
3 \downarrow	4/5	6	10	1/75	12/2	059	+15	
4 \downarrow	5	5/5	15	1/75	12/0	260	-8	
5 \uparrow	7	1	20	1/75	18/3	036	+8	
6 \downarrow	0/3	0/3	20	1/75	17/2	151	+5	
7 \uparrow	5	5	20	1/75	8/5	311	-1	
8 \downarrow	11	18	20	1/75	12/5	174	+1	
9 \uparrow	6	7	4	1/75	8/1	018	0	
10 \downarrow	3	3	0/5	0/9	12/0	191	-5	
					(10/7)			
1.0 \downarrow								
7 \downarrow					5/8	211	0	
12 \downarrow					25/0	093	0	

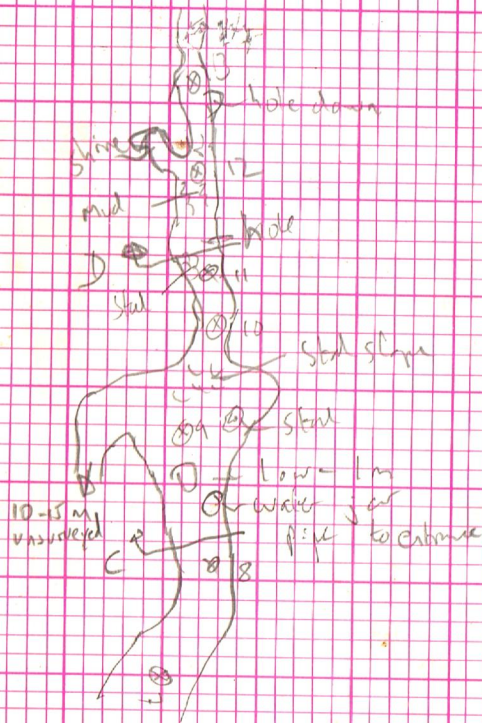
Cave formed on antidiure C2-1
315. eroded at cut - alt ??

315. engraved at cut - all



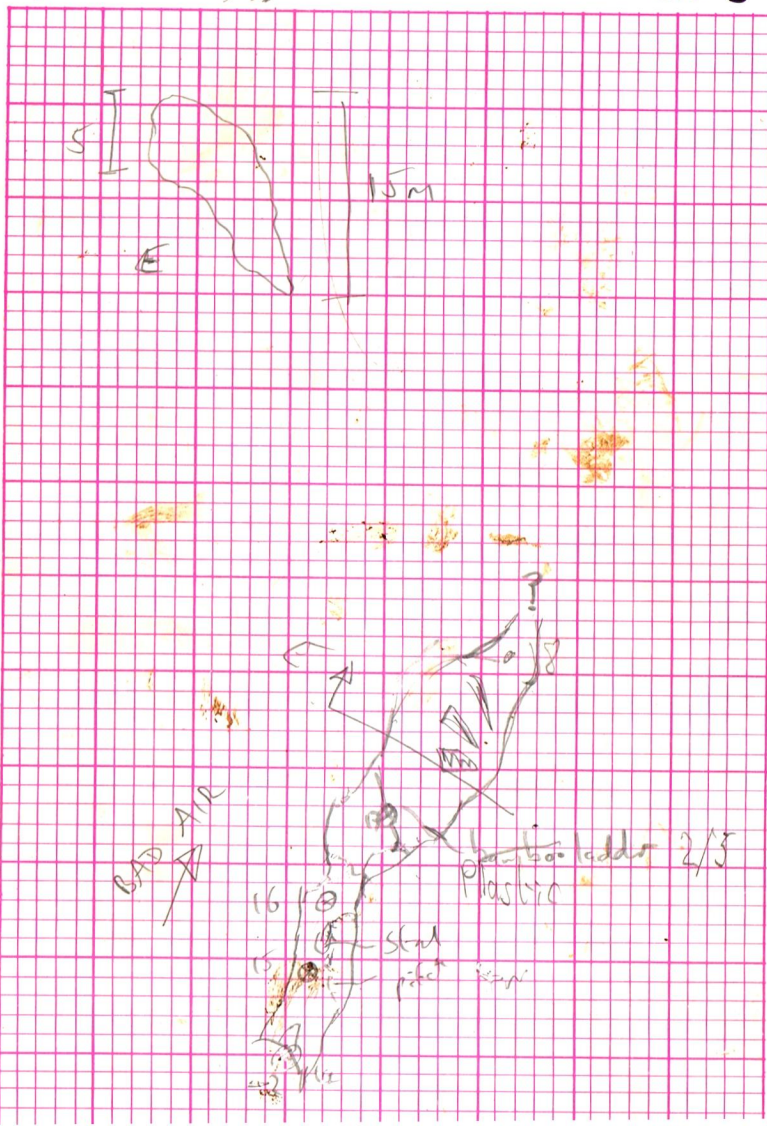
[illegible]

C10-2



[illegible]

(10-3)



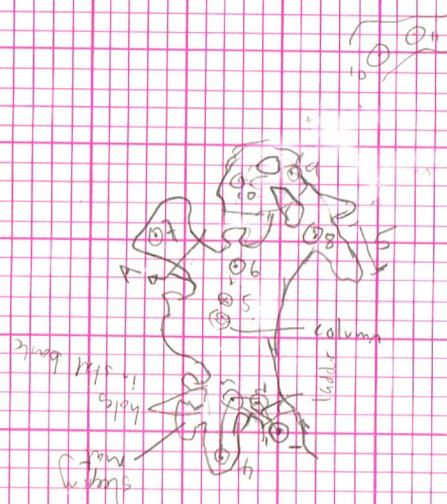
Cave 11

STATION	L	R	U	D	CAVE? Tham Nimit			
					DISTANCE	MAGNETIC BEARING	VERT. ANGLE	VERT. RANGE
1				1/75				
2			2	1/2	5/6	337	+54	
3	10	1	1	1/75	4/0	219	-5	
4	2	0/5	1	1/2	7/6	277	-23	
2								
5	10	1	2	1/75	6/3	299	-8	
6	13	5	2	1/75	7/5	144	+10	
7	1	4	2	1/75	9/2	260	+2	
6								
8			4	1/75	6/7	028	+9	
9	8	0/2	4	1/75	46/9 5/5	000	-35	
10	2	2	5	1/75	6/2	079	+79	
					2/6	016	-39	

C11-1

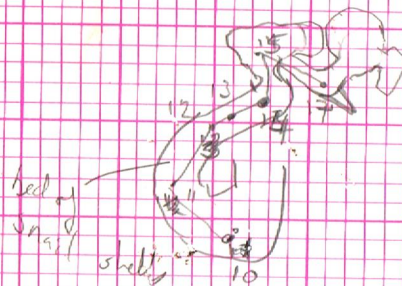


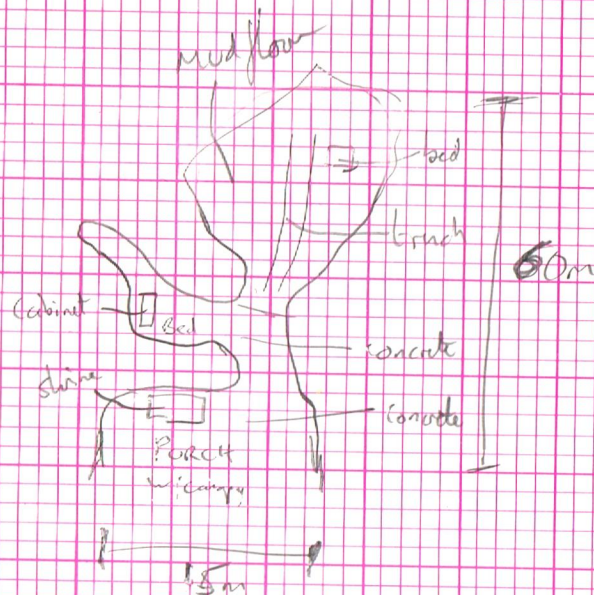
Mud floor, stal wall



[illegible]

C11-2

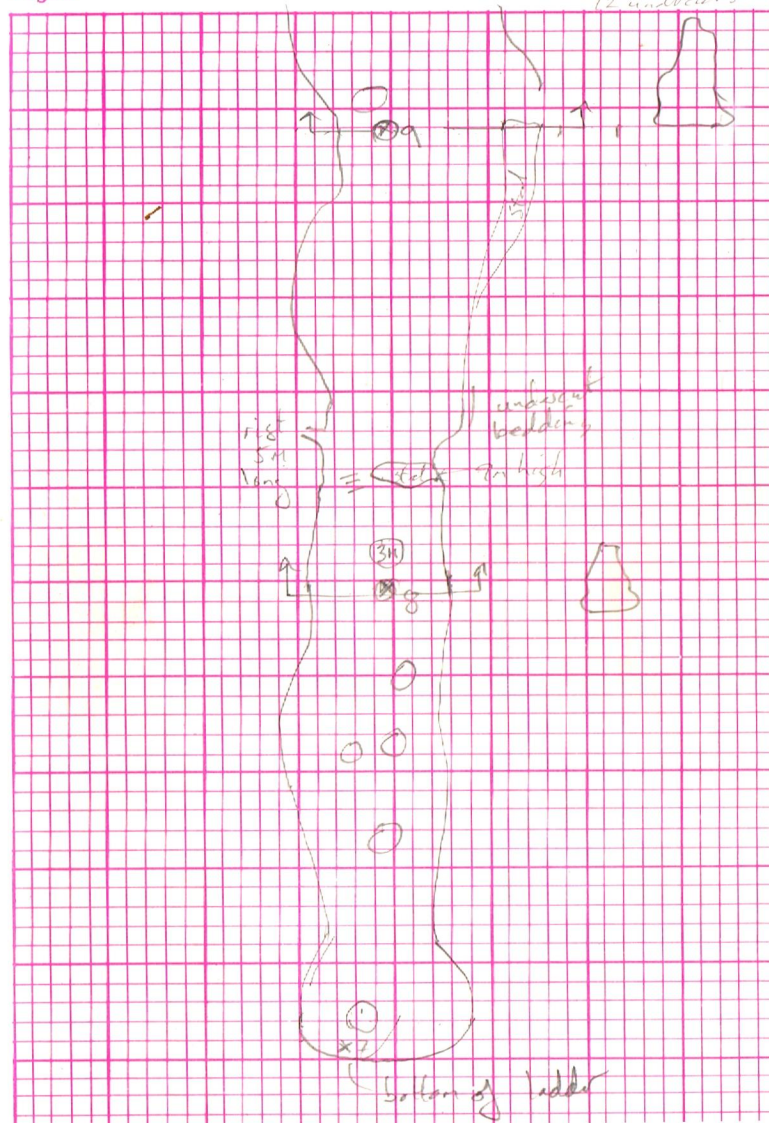


[illegible]

possibly archaeological

STATION	L	R	U	D	CAVE? <i>Then Sai Chai Patgui Tip 2</i>	DISTANCE <i>57/9</i>	MAGNETIC BEARING	VERT. ANGLE	VERT. RANGE
7 \uparrow	2/5	7	7/0	1/3		24/9	190	+8	
8 \downarrow	4/2	2/9	12	1/5		24/3	038	0	
9 \uparrow	5/7	3/2	16	1/3		18/1	180	+9	
10 \downarrow	4/5	8	6	1/5		2/8	001	-40	
11 \uparrow	4/5	8	8	1/3		7/25	220	-5	
12 \downarrow	1	2	12	1/5		6/1	097	-16	
13 \uparrow	1/5	3 <i>to 6</i>	7	1/3		10/25	266	-27	
14 \downarrow	3	3	9	1/5		6/0	112	+4	
15 \uparrow	1	3	6	1/3		6/5	237	+4	
16 \downarrow	4	2	4	1/5		1/4/12 5/4			
						168m			
						-8m pitch			
						160m			

C14-2

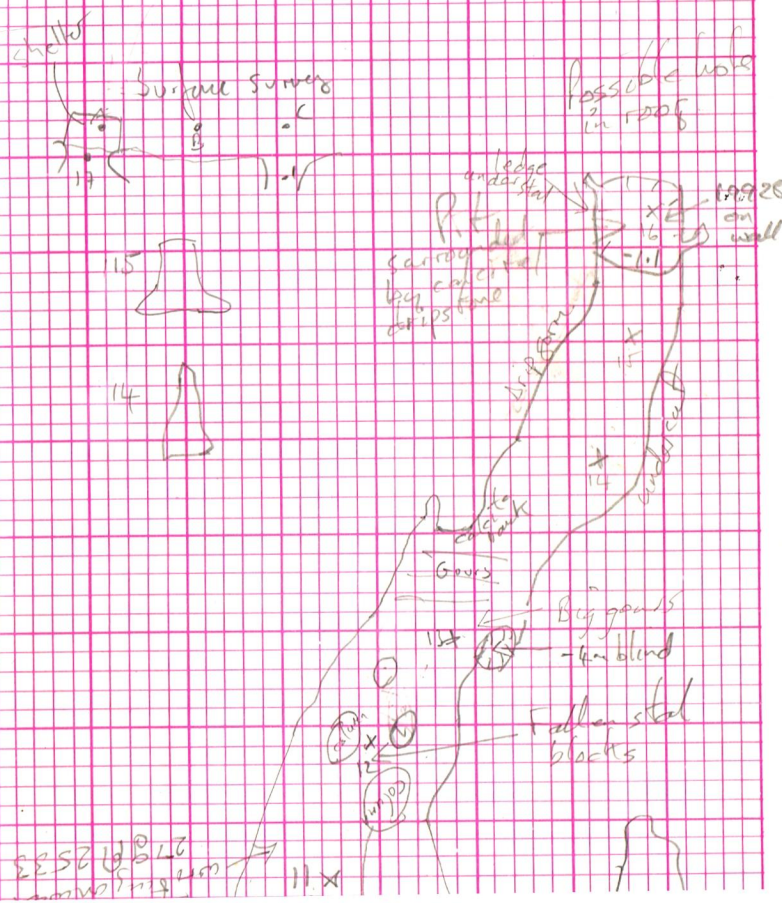
5.7 doted
12 undotted

[illegible]

190 Def - to South

C14-3

Bearing (C) to hill 322°



STATION	L	R	U	D	CAVE? Tham So			
					DISTANCE	MAGNETIC BEARING	VERT. ANGLE	VERT. RANGE
1				1/7	8/40	265°		
2				1/7	5/40	243°		
3				1/7	3/60	173°		+4
4				1/7	8/40	171°		
5				1/2	7/20	246°		
6				1/2	8/40	295°		
7				1/0	12/00	310°		
8				1/0	<u>53.40</u>			

