

THAM CHAO RAM

JANUARY 1996

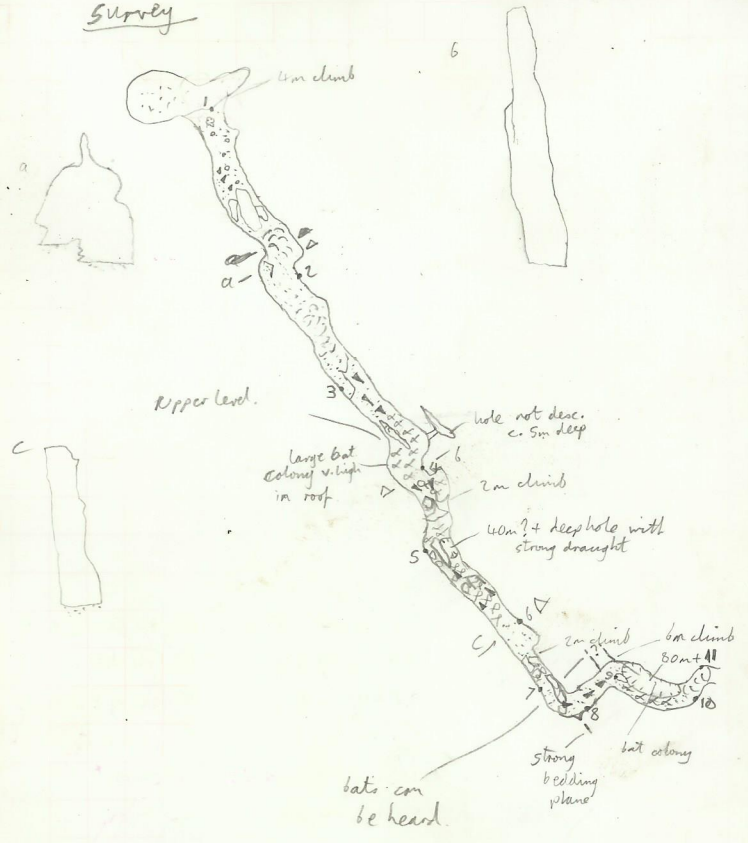
Book! Dean Smart

WALLS SI008A

①

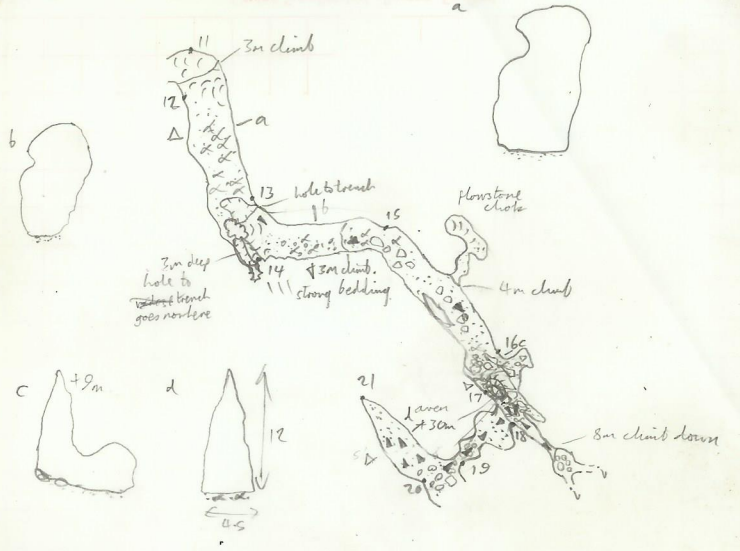
stat	D	B	A	L	R	C	F	stt
1 → 2	30.00	174	+01	1.5	1.5	8.0	1.4	1
2 → 3	19.20	184	-04	-	3.6	4.5	1.3	2
3 → 4	16.20	158	-09	2.8	-	-	1.2	3
4 → 5	10.00	239	-20	3	3.8	<del>1.5</del> <sup>20.4</sup> 1.5	<del>2.0</del> 1.7	4
5 → 6	15.00	170	+16	3.0	7	25.4	1.6	5
6 → 7	7.80	204	+23	-	7.2	8.0	1.5	6
7 → 8	4.80	149	-09	2.2	-	3.5	1.2	7
8 → 9	8.20	082	-24	1.9	-	5.0	1.2	8
9 → 10	13.00	161	-01	2.5	1.5	15.7	1.4	9
10 → 11	5.38	058	+10	3.0	17	1.7	1.0	10
				-	1.6	10	1.2	11

Survey



stat	D	B	A	L	R	C	F	stat
11 → 12	4.56	1.95	+43	2.8	6.0	1.2	12	
12 → 13	7.64	1.86	+02	-	2.4	4.5	1.0	13
13 → 14	7.58	1.65	-18	2.9	-	6.0	1.6	14
14 → 15	13.08	0.67	+16	-	3.8	2.0	1.6	15
15 → 16	20.10	1.61	-14	-	4.4	3.0	1.6	16
16 → 17	9.60	2.25	+15	5.7	-	3.0	1.7	17
17 → 18	9.55	1.81	-28	3.8	-	10.0	1.1	18
								4.4m across 'entrance'
18 → 19	11.00	3.01	+09	2.0	2.6	-	0.9	19
19 → 20	8.04	2.03	+26	1.8	5.2	-	1.6	20
20 → 21	15.16	0.01	-12					end of passage 21
								22
								23

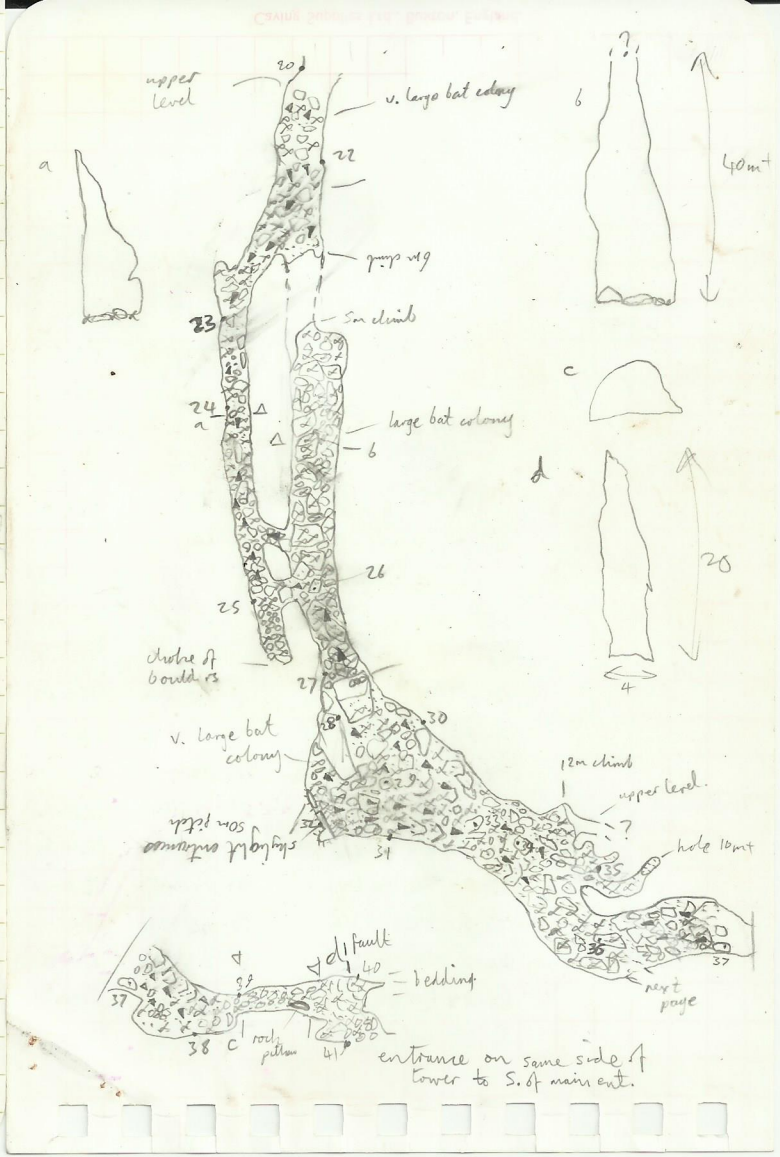
white millipedes feed on wet running guano, avoid dry.





stat	D	B	A	L	R	C	F
20 → 22	11.57	160	+10	-	7.3	30	1.4 22
22 → 23	26.73	212	-13	4.5	-	6.0	1.6 23
23 → 24	16.05	174	+03	4.5	-	7.5	1.5 24
24 → 25	26.15	172	+14	4.3	-	1.0	1.4 25
25 → 26	8.26	078	+16	5.1	3.5	4.0	- 26
26 → 27	12.80	201	+29	4.2	-	4.0	0.7 27
27 → 28	11.20	202	+20	9.7	-	4.0	1.0 28
28 → 29	15.80	174	-06	-	-	-	- 29
29 → 30	11.11	073	-10	-	-	-	- 30
29 → 31	13.40	242	+16	-	-	-	- 31
29 → 32	25.26	200	+31	-	-	-	- 32
29 → 33	27.20	152	-33	14.10	13.20	20	- 33
33 → 34	10.80	145	-26	12	-	17.0	20 - 34
34 → 35	27.20	144	-01	-	-	-	- 34
34 → 36	27.47	195	-16	-	-	-	- 34
36 → 37	29.30	178	+17	12.3	11.9	14.0	1.3 37
37 → 38	26.70	198	-14	-	-	-	- 38
38 → 39	13.37	067	+01	-	2.7	0.7	1.6 39
39 → 40	24.90	156	+11	-	-	20	1.3 40
40 → 41	16.46	254	-15	10.10	-	4.5	1.6 41

Caving Supplies Ltd., Buxton, England.



stat	D	B	A	L	R	C	F
36→42	30.40	233	-09	7.41	-	9.0	1.5 42
42→43	27.50	138	-06	-	9.20	10.0	1.6 43
43→44	13.64	204	-04				<del>44</del>
44→45	24.79	241	-12	1.7	9.5	7.5	- 44
				7.2	-	5.5	1.7 45

9

